

MSC Project Update

Stakeholder Meeting
May 15, 2020

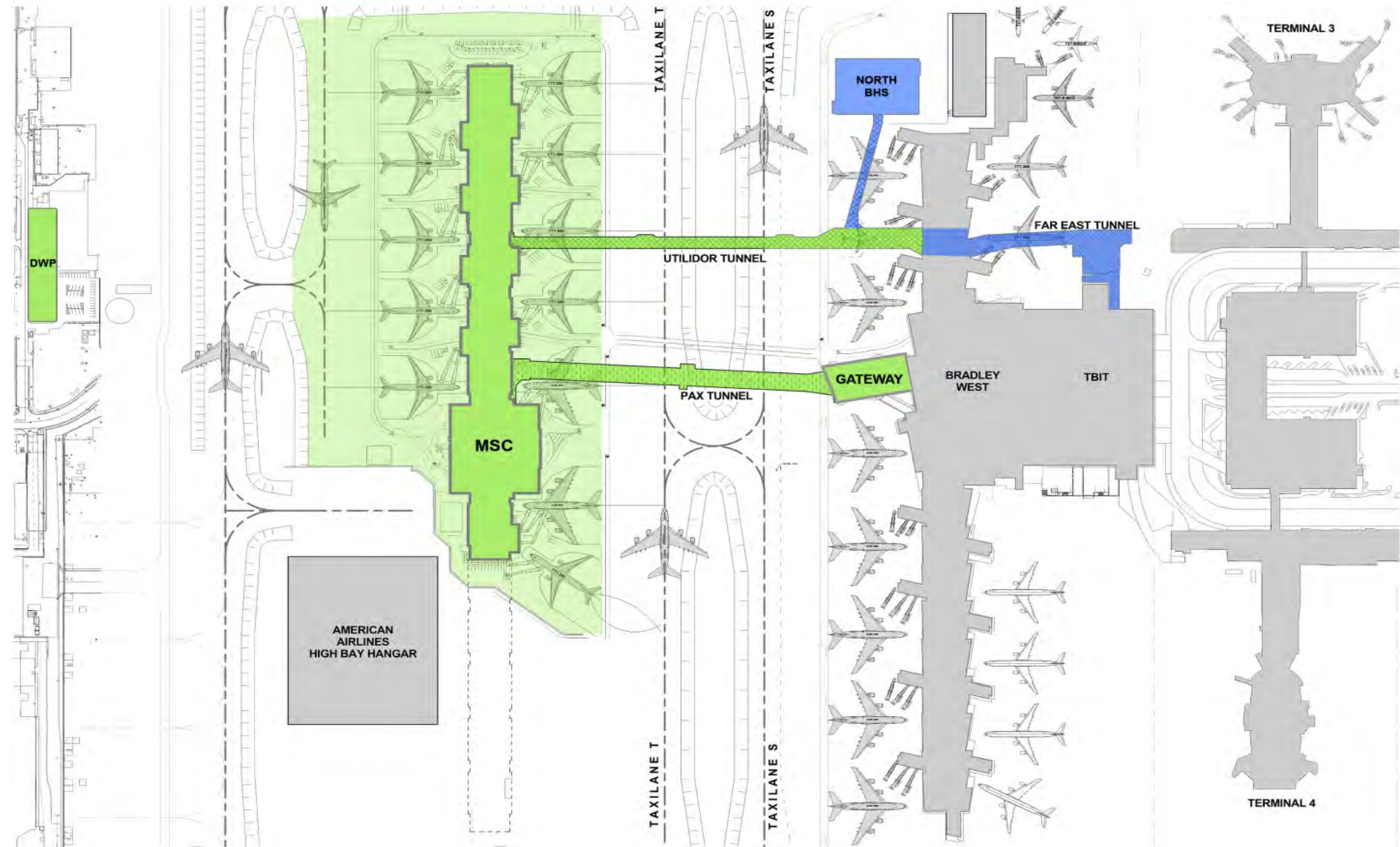
MSC - Project Components

MSC Project

1. MSC Concourse - 15 Gates
2. Gateway
3. PAX Tunnel
4. Utilidor / Crossover Tunnel
5. Taxilanes & Apron
6. DWP Substation

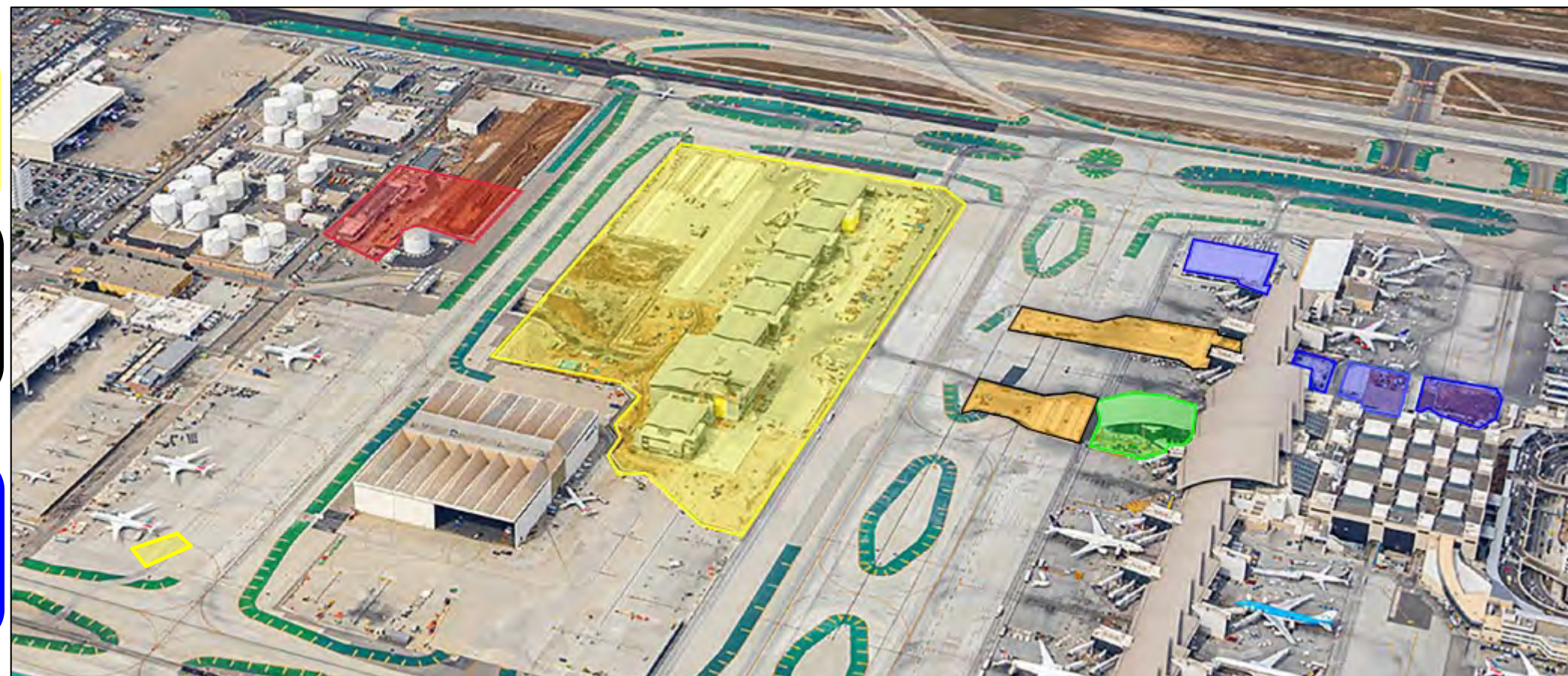
Baggage Optimization Project (BOP)

1. Far East Tunnel
2. North BHS Structure
3. North Tunnel



Updates by Geography

- ☐ MSC
 - ☐ Concourse
 - ☐ Civil
- ☐ Tunnels
 - ☐ TPAX
 - ☐ Utilidor
- ☐ Gateway
- ☐ BOP
 - ☐ BOP NBHS (IWBT)
 - ☐ BOP Far East Tunnel (Gate 131)
- ☐ BHS



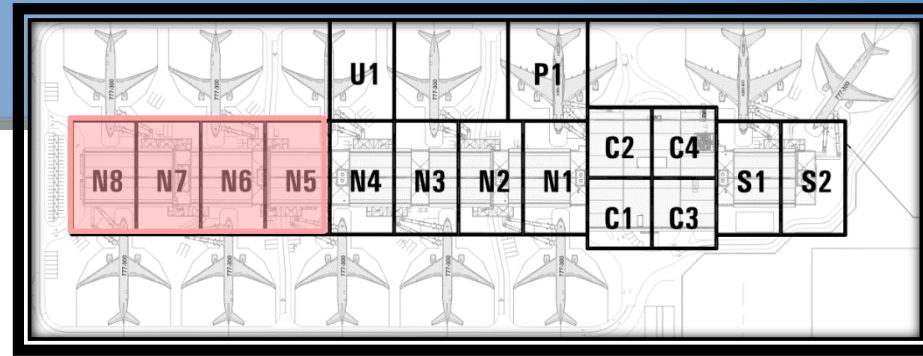
General Updates / Progress:

- ❑ Terrazzo activities ongoing at various stair locations (observation made at Basement Core, Apron Core, Concourse N1, Gatehouse Stairs)
- ❑ Gyp board finishes ongoing at various locations
- ❑ Wood ceiling panels are still being installed at N2 area East
- ❑ Otis working on various escalators throughout MSC (observation made at Apron Core, N1 Grand Escalator)
- ❑ Group III construction progressing (observed interior framing activities at egress stairs)
- ❑ CBP & TSA Processing Area in the Basement is progressing (ceiling device tiles installed, cameras installed, scaffold for separation screen wall has been placed)

Upcoming / Ongoing Coordination:

- ❑ DAS upgrades progressing and being coordinated with TPJV weekly
- ❑ Ongoing coordination walk with TPJV/LAWA Maintenance for MEP access
- ❑ Ongoing coordination with URW Concession Storage Construction
- ❑ Ongoing coordination with Vanderlande Commissioning





G209: Terrazzo Sand Infill at Terrazzo Stair



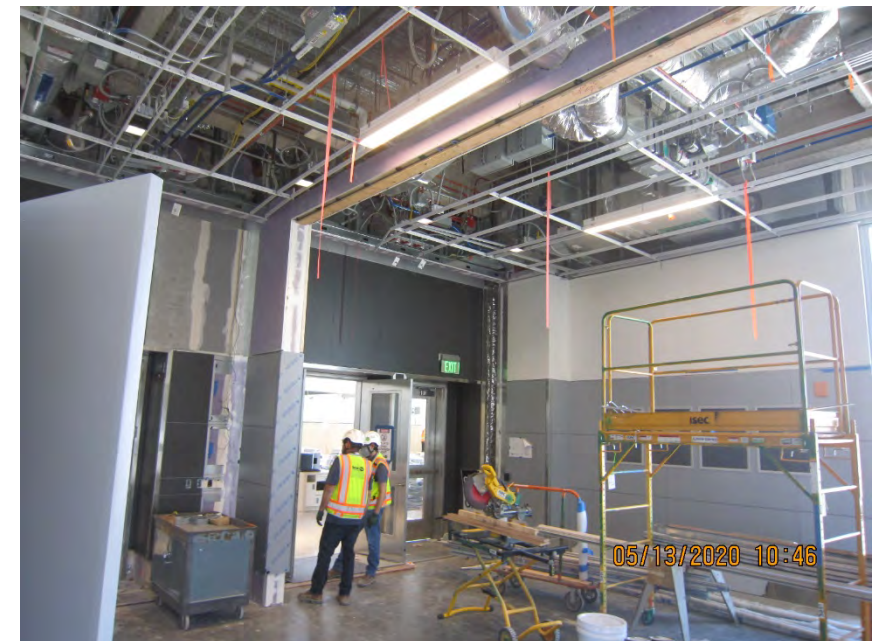
G207: Typical Frames For CBP Signs Located at All Gates



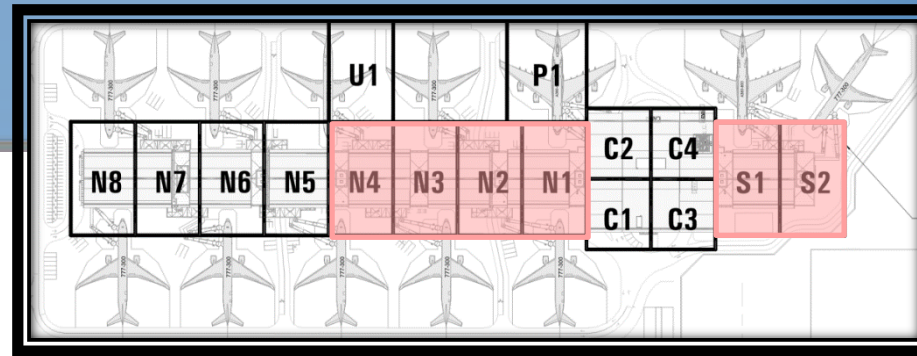
Group III: G209A Podium Area



Group III: Phenolic & Gyp finishes at Divider Wall @ G210



Group III: Phenolic & Gyp Finishes at Divider Wall @ G209



Family Restroom at Basement FIS Processing Area



Mens Restroom at Basement FIS Processing Area



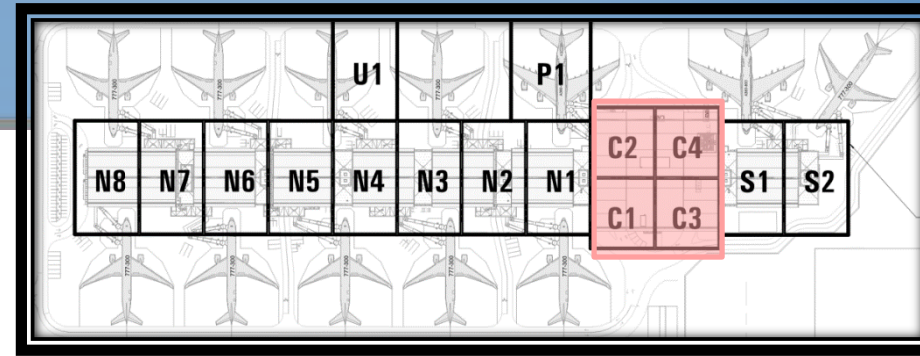
Main Queuing Spaces at Basement FIS Processing Area



Entry Into TSA Screening Area Post CBP



TSA Podium



Sand Infill at Terrazzo Stair Treads at Core



Gyp Ceiling Sanding Activities by PCI (Blue Lifts)



Basement: Terrazzo Prep at Bottom of C2 Grand Escalator



Basement: Terrazzo Prep at Bottom of C4 Grand Escalator

General Updates / Progress:

- ☐ Turnover date 5/26, 5/27
- ☐ Changes to ceiling and console equipment on desk ongoing
- ☐ Elevator final inspection 5/15
- ☐ O&M Training - 3 remaining

Upcoming Coordination:

- ☐ IDS-5, Ring-Down lines installation coordination with FAA - August 2020



Ramp Controller



Updates by Geography

- ☐ MSC
 - ☐ Concourse
 - ☐ Civil
 - ☐ Tunnels
 - ☐ TPAX
 - ☐ Utilidor
- ☐ Gateway
- ☐ BOP
 - ☐ BOP NBHS (IWBT)
 - ☐ BOP Far East Tunnel (Gate 131)
- ☐ BHS



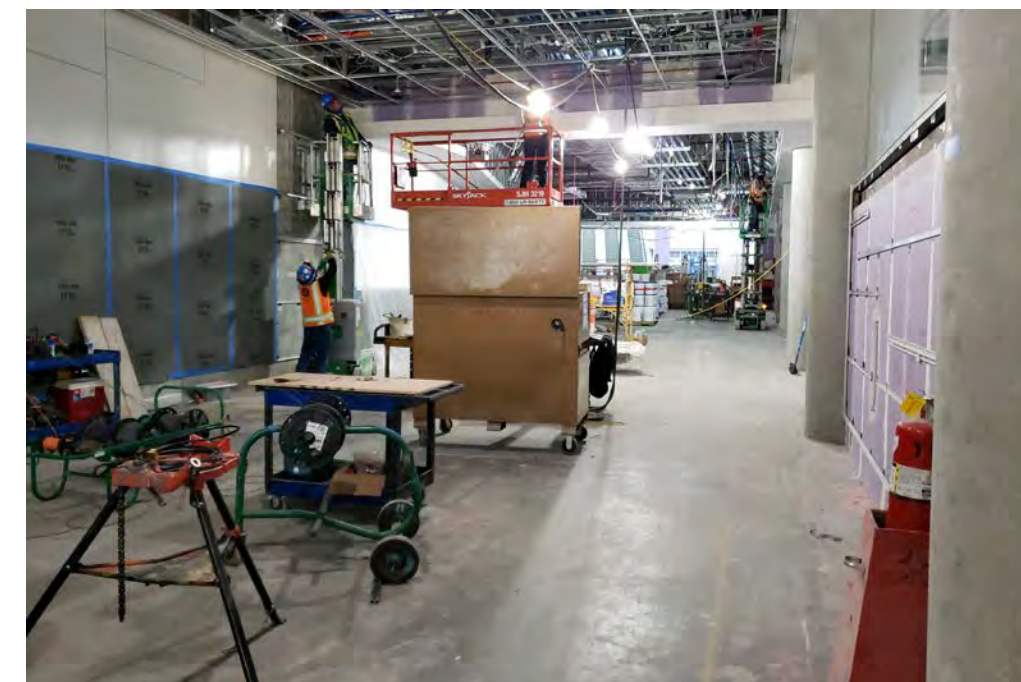
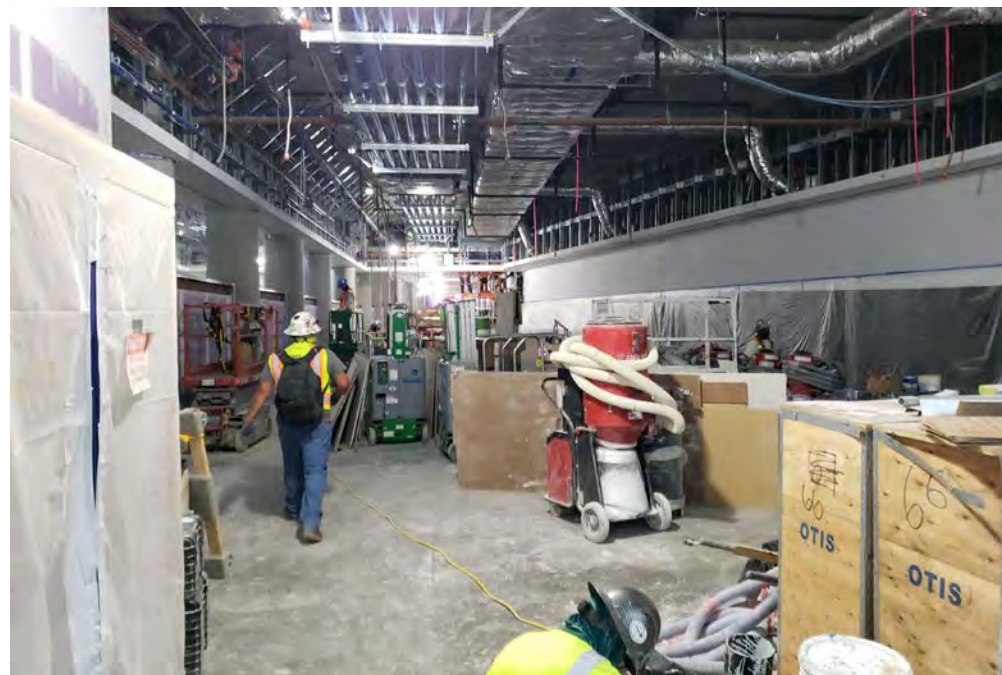
Passenger Tunnel Interiors

General Updates:

- ❑ Overhead MEP continues at east end
- ❑ Terrazzo is nearly complete. TPJV is starting work on their final area next week
- ❑ Phenolic panel installation continues at the south side center wall
- ❑ Ceiling continues to be closed-up at the east half of the tunnel
- ❑ JCDecaux continues their install of devices at the west end of the tunnel
- ❑ Otis working on glass handrail for moving walkways

Upcoming Coordination:

- ❑ Taxiway K closure to end on 5/18



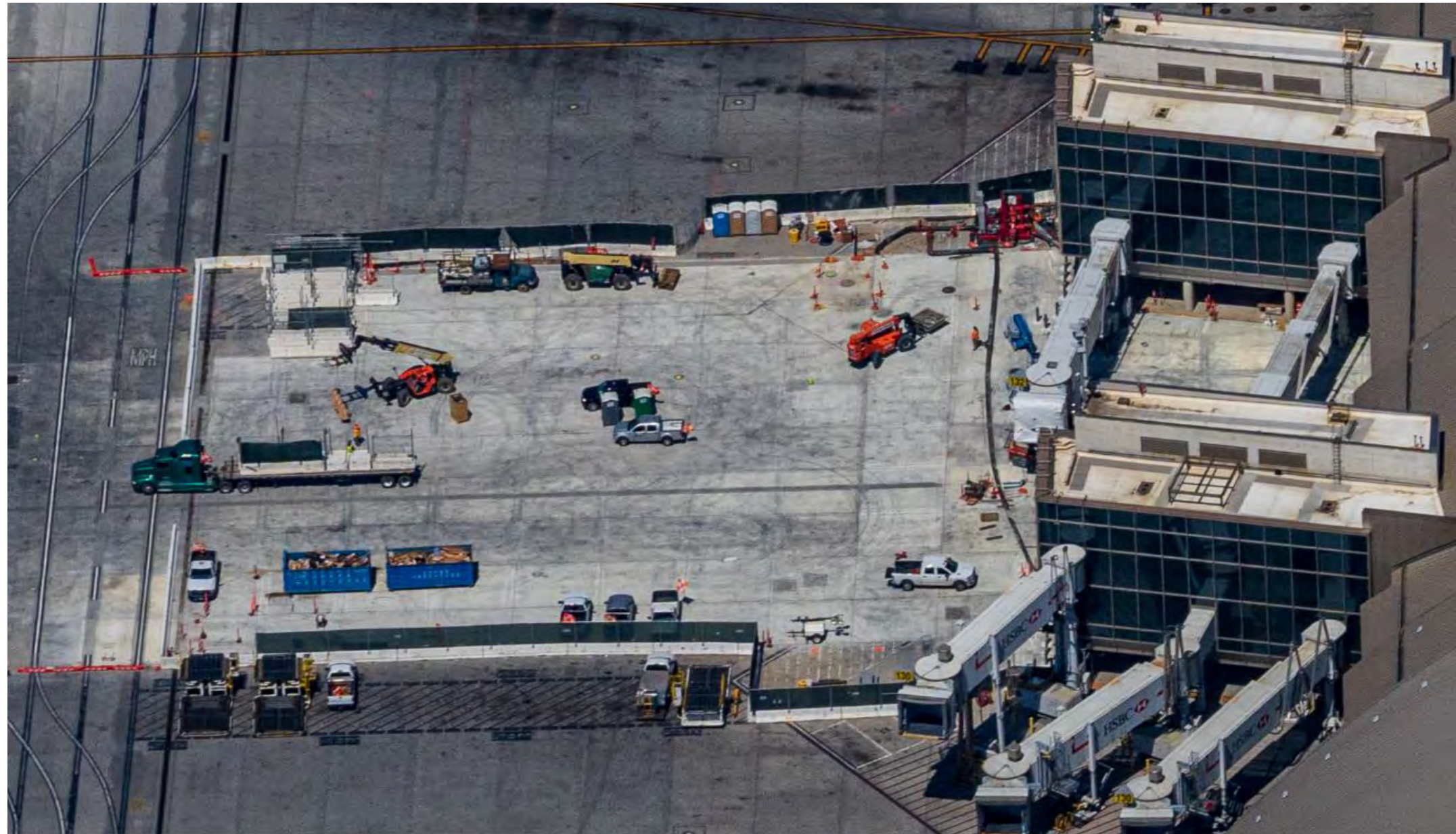
Utilidor Crossover Tunnel (Gate 132)

General Updates

- ☐ PCC Paving Complete
- ☐ PBB commissioning is complete
- ☐ G132 Traffic Markings scheduled for this weekend
- ☐ Final PCC quality issues being resolved
- ☐ Final Cleaning of gate scheduled ongoing

Upcoming Coordination:

- ☐ Gate 132 Re-opening
 - ☐ Scheduled 5/20
 - ☐ Gate-fits scheduled for week of 5/18



Updates by Geography

- ☐ MSC
 - ☐ Concourse
 - ☐ Civil
- ☐ Tunnels
 - ☐ TPAX
 - ☐ Utilidor
- ☒ Gateway
- ☐ BOP
 - ☐ BOP NBHS (IWBT)
 - ☐ BOP Far East Tunnel (Gate 131)
- ☐ BHS



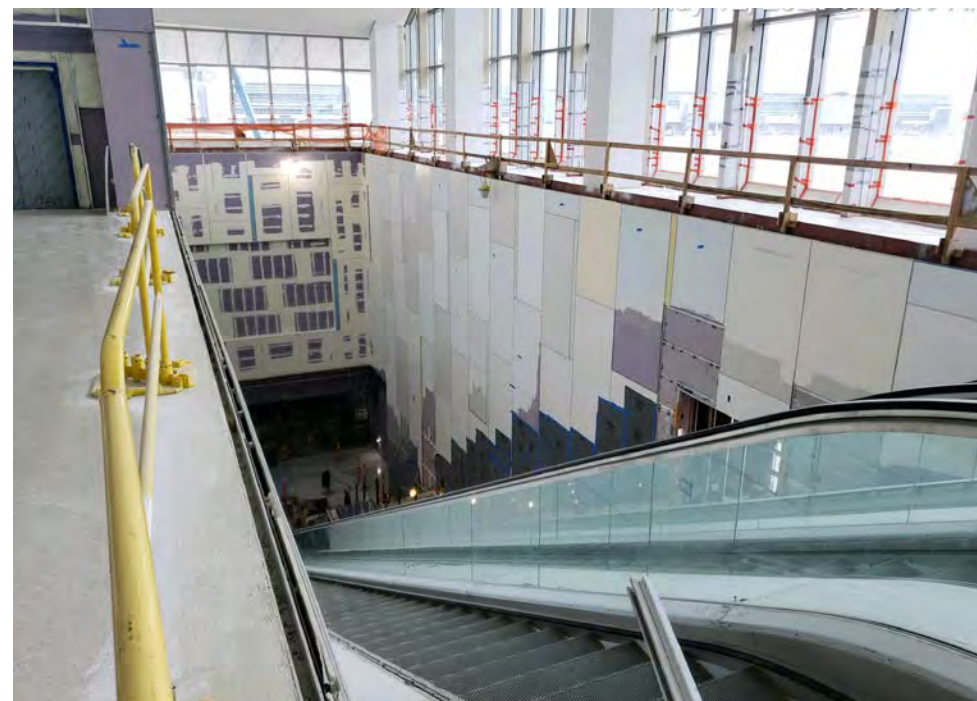
Gateway - New Construction

General Update:

- ❑ OH MEP and devices continue at apron and basement
- ❑ Otis Continues Elevator and Escalator install
- ❑ Terrazzo work complete at concourse – continues at apron
- ❑ Exterior metal panels continue at South elevation
- ❑ High roof perimeter work ongoing
- ❑ Concrete sidewalks around Gateway continue

Upcoming Coordination:

None at this time



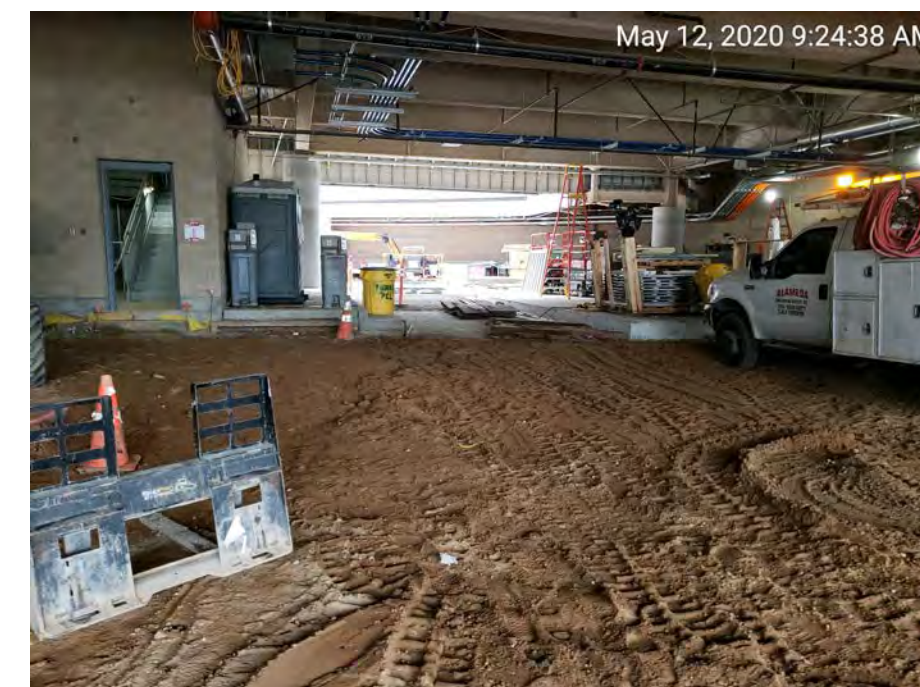
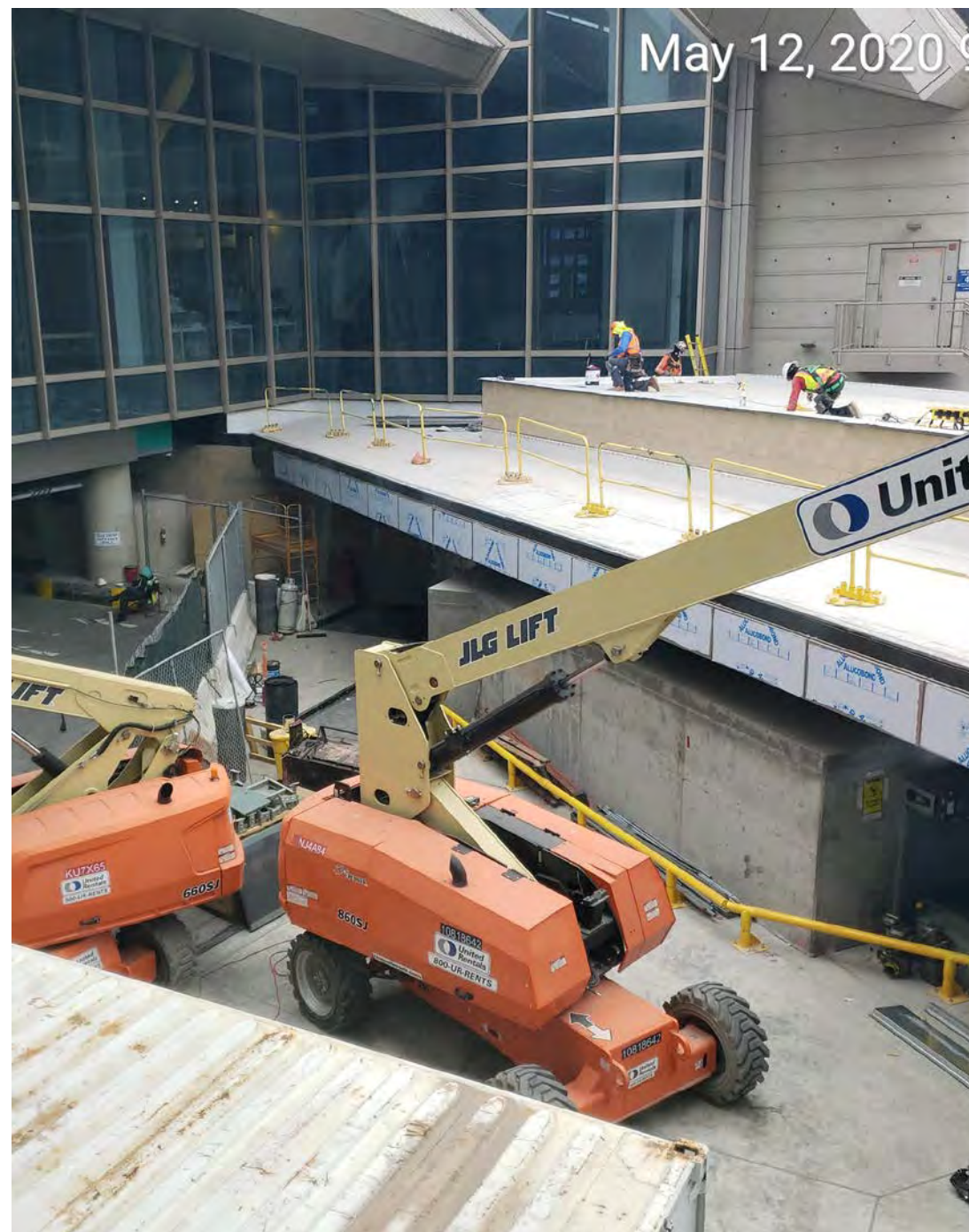
Gateway - Remodel Construction

General Update:

- ❑ Conveyor CF10B electrical install continues to apron
- ❑ Apron paving near inbound baggage
 - ❑ Paving rebar and grading continues
 - ❑ Curbs and sidewalk continue at North half
- ❑ Work in TBIT connector hallway
 - ❑ Ceiling framing continues
 - ❑ Terrazzo placed in corridor

Upcoming Coordination:

- ❑ Pylon installation at TBIT concourse
 - ❑ Installation work plan being reviewed with Operations
 - ❑ Anticipated start mid-June



Updates by Geography

- ☐ MSC
 - ☐ Concourse
 - ☐ Civil
- ☐ Tunnels
 - ☐ TPAX
 - ☐ Utilidor
- ☐ Gateway
- ☐ BOP
 - ☐ BOP NBHS (IWBT)
 - ☐ BOP Far East Tunnel (Gate 131)
- ☐ BHS



TUTL - North Tunnel (Gate 134)

General Updates:

- ☐ Tieback installation and tensioning – Complete
- ☐ Excavation – Ongoing
- ☐ Sanitary Sewer point of connection work
 - ☐ Sewer Shutdown scheduled for Friday morning for the tie-in of new pipe
 - ☐ USR approved

Upcoming Coordination:

- ☐ Removal of temp. bypass system after the tie-in of new pipe
 - ☐ Workplan forthcoming



General Updates:

- ☐ Elevator commissioning and testing – Upcoming
- ☐ Paving
 - ☐ Grading/compaction – Complete
 - ☐ Base (PMB) – Ongoing
 - ☐ Concrete panels (PCC) – Upcoming
 - ☐ Asphalt – Upcoming

Upcoming Coordination:

None at this time



BOP Far East Tunnel (Gate 131)

General Update:

- ❑ Area 1
 - ❑ PBB Installation - Ongoing
- ❑ Area 2
 - ❑ Concrete pavement - Completed
- ❑ Area 3
 - ❑ Concrete pavement (LCB / PCC) - Ongoing
 - ❑ Grading and form Work the pavement at west of the Tug Ramp – Completed.
 - ❑ Concrete pavement at west of the Tug Ramp - Ongoing
 - ❑ TBIT Connector:
 - ❑ Exterior walls panels installation - Ongoing

Upcoming Coordination:

None at This Time

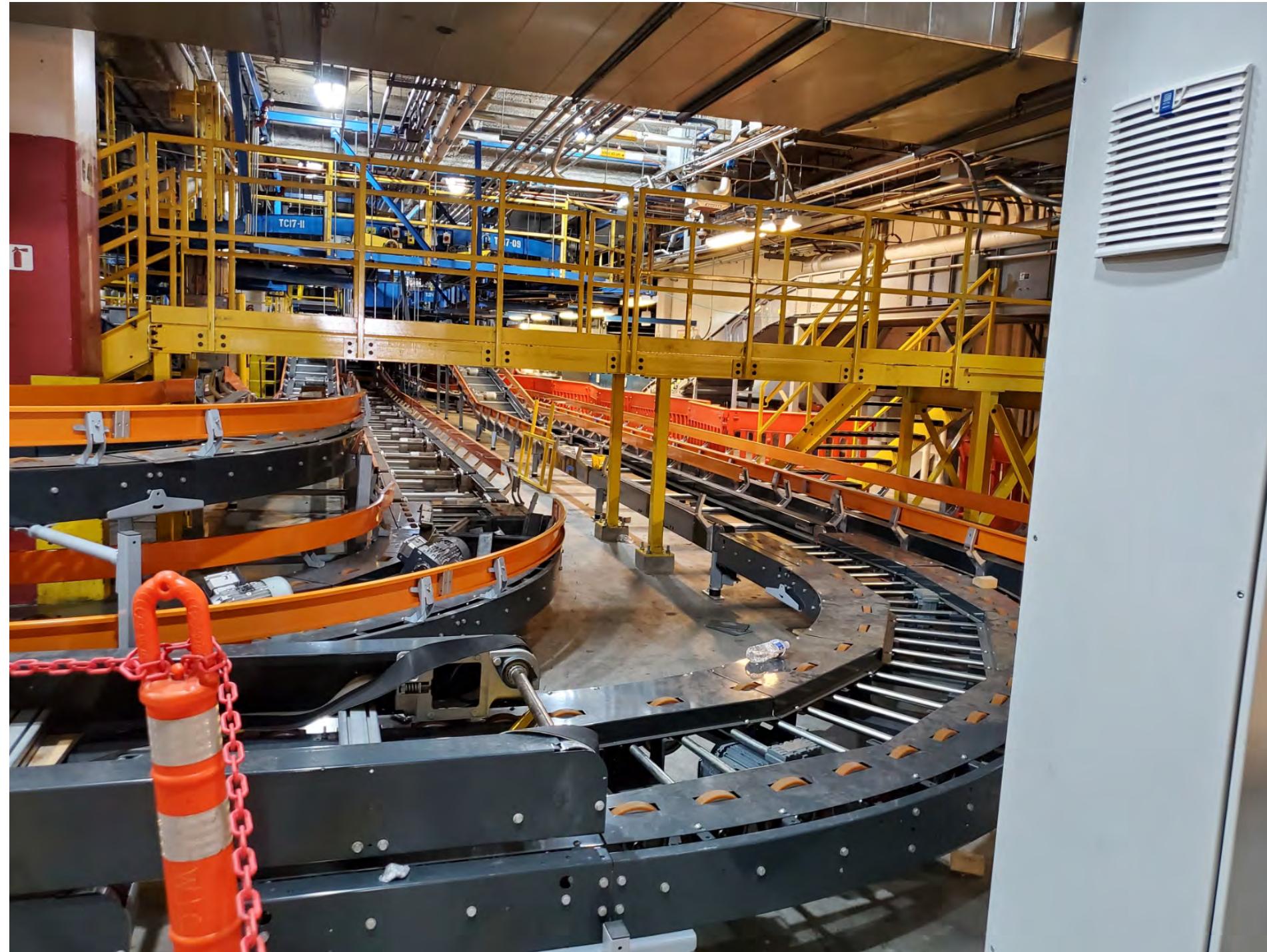


General Updates:

- ❑ Mechanical Installation: 92% (+2)
- ❑ Electrical Installation: 62% (+7)
- ❑ Pre-Commissioning is continuing in the tunnels.
- ❑ Integration and testing is continuing in the MSC.
- ❑ Punch walk for DC7 was completed on 5/14/2020.
- ❑ Continuing to coordinate the Fire Door operations with TPJV.
- ❑ No severe COVID-19 impacts at this time.

Upcoming Coordination:

- ❑ North Tunnel turnover anticipated on October 16, 2020 (-2 months)



MSC Mech/Plum/FP Commissioning

General Updates/ Progress:

- ☐ HVAC CRC Unit Pre Functional Test – Complete
- ☐ HVAC Test & Balance – Ongoing
- ☐ Air Handling Unit Test & Balance – Ongoing
- ☐ Fan Coil Unit Pre Functional test – Ongoing
- ☐ Trap Primer Functional test – Ongoing
- ☐ Air Handling Unit Pre Functional test – Ongoing
- ☐ Exhaust Fan Pre Functional Test – Ongoing

Upcoming Functional Testing:

- ☐ Air Handling Unit Functional Test – Late May



Testing Sequence



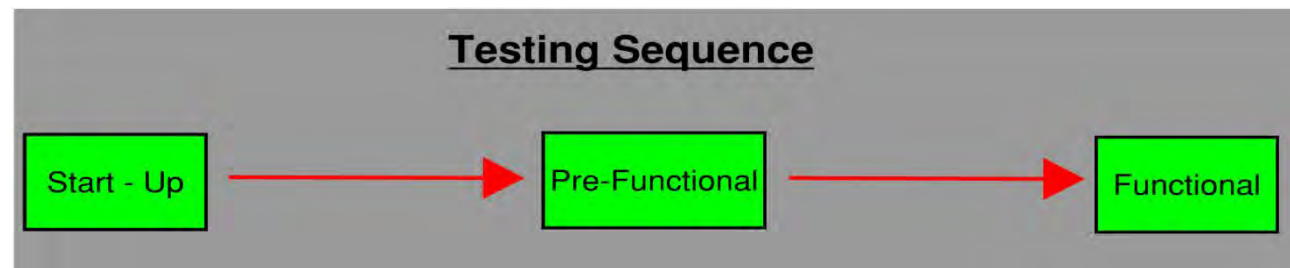
MSC Electrical/IT Commissioning Update

General Updates/ Progress:

- ☐ Low Voltage System Pre Functional Test– Ongoing
- ☐ Lighting Control Pre Functional Test – Ongoing
- ☐ Fire Alarm system Functional test – Ongoing
- ☐ Emergency Power System Pre Functional Test – Late May

Upcoming Functional Testing:

- ☐ Emergency Power System Functional Test – Mid June

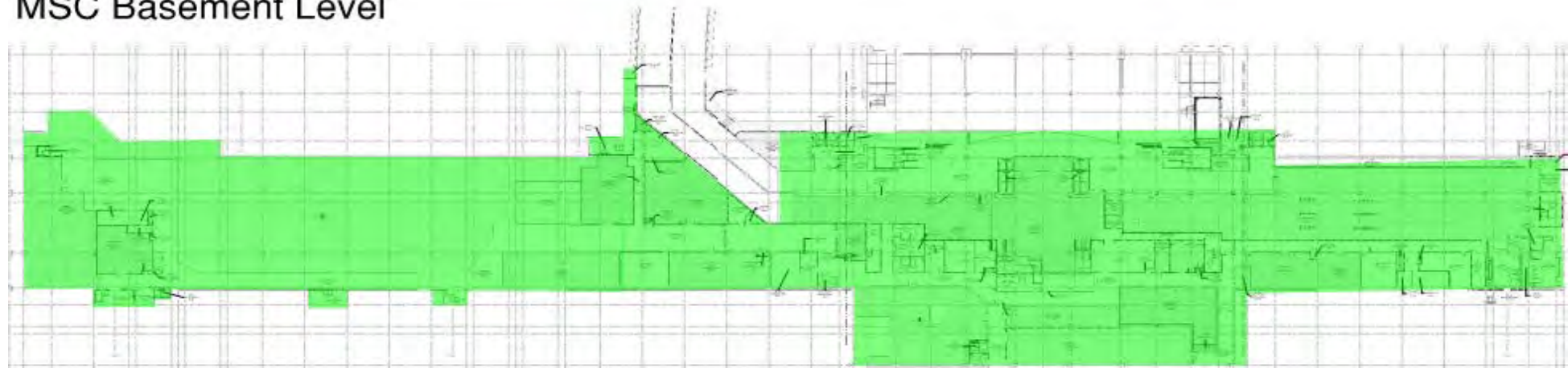


Maintenance Access Update

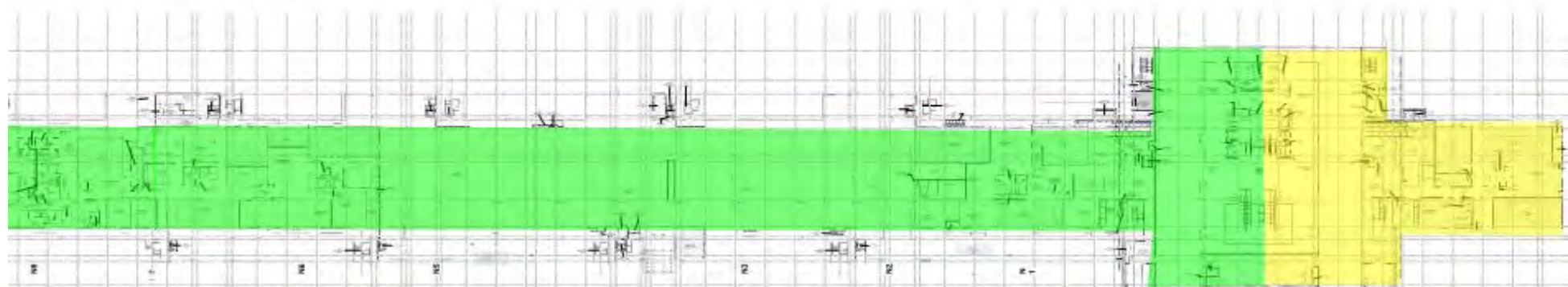
General Update:

- ☐ MSC Basement Level:
 - ☐ 100% Complete
 - ☐ Issues
 - ☐ Open: 4 Closed: 0
 - ☐ NNC
 - ☐ Open: 0 Closed: 0
- ☐ MSC Apron Level:
 - ☐ 80% Complete
 - ☐ Issues
 - ☐ Open: 2 Closed: 9
 - ☐ NNC
 - ☐ Open: 6 Closed: 2

MSC Basement Level



MSC Apron Level



- ☐ Areas Walked
- ☐ Areas To Be Walked

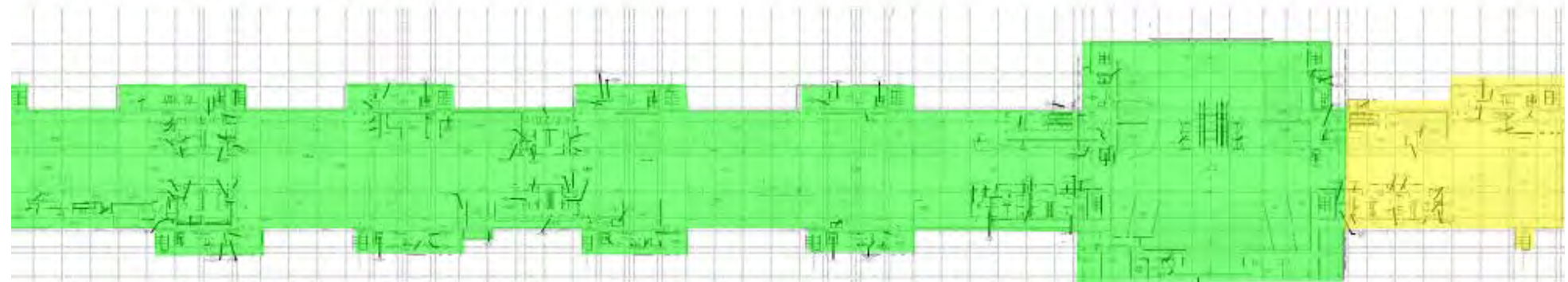
Maintenance Access Update

General Update:

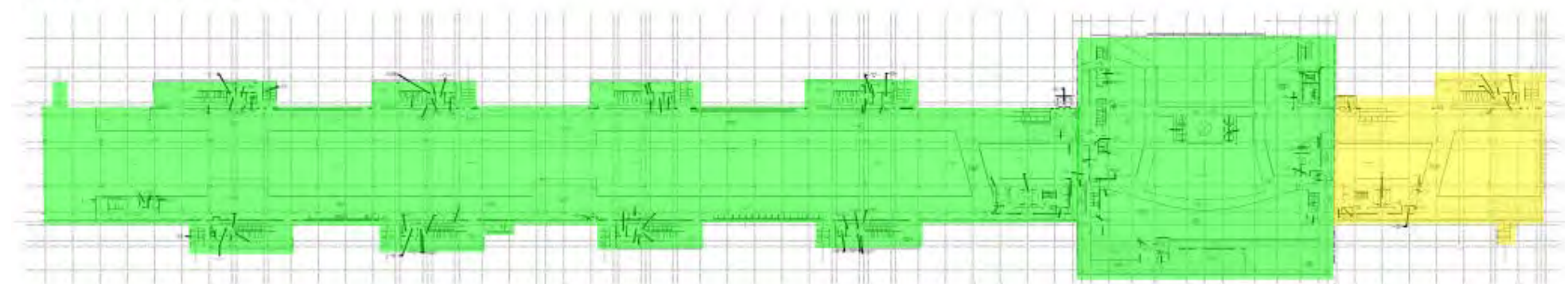
- ☐ MSC Concourse Level:
 - ☐ 90% Complete
 - ☐ Issues
 - ☐ Open: 5 Closed: 26
 - ☐ NNC
 - ☐ Open: 7 Closed: 28

- ☐ MSC Sterile Level:
 - ☐ 80% Complete
 - ☐ Issues
 - ☐ Open: 1 Closed: 1
 - ☐ NNC
 - ☐ Open: 0 Closed: 1

MSC Concourse Level



MSC Sterile Level



- ☒ Areas Walked
- ☐ Areas To Be Walked

Maintenance Access Update

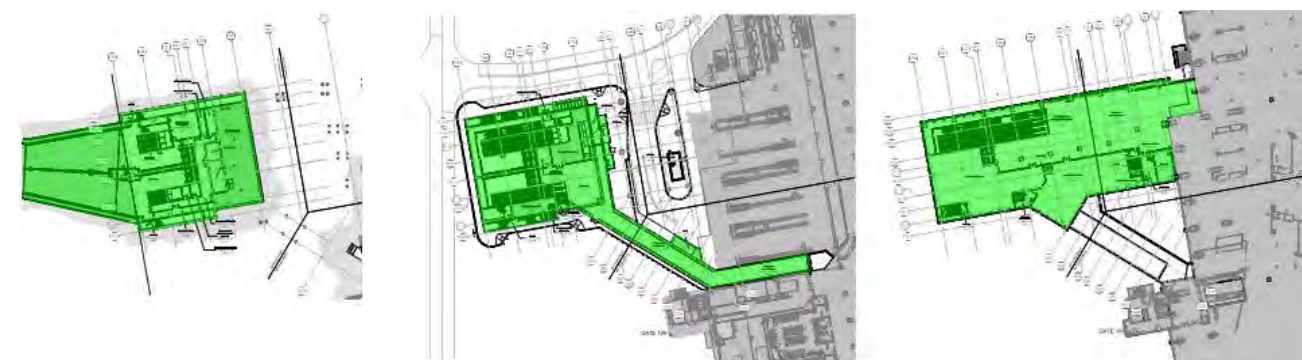
General Update:

- ☐ Gateway:
 - ☐ 100% Complete
 - ☐ Issues
 - ☐ Open: 0 Closed: 1
 - ☐ NNC
 - ☐ Open: 1 Closed: 0
- ☐ TPAX:
 - ☐ 100% Complete
 - ☐ Issues
 - ☐ Open: 1 Closed: 0
 - ☐ NNC
 - ☐ Open: 1 Closed: 0

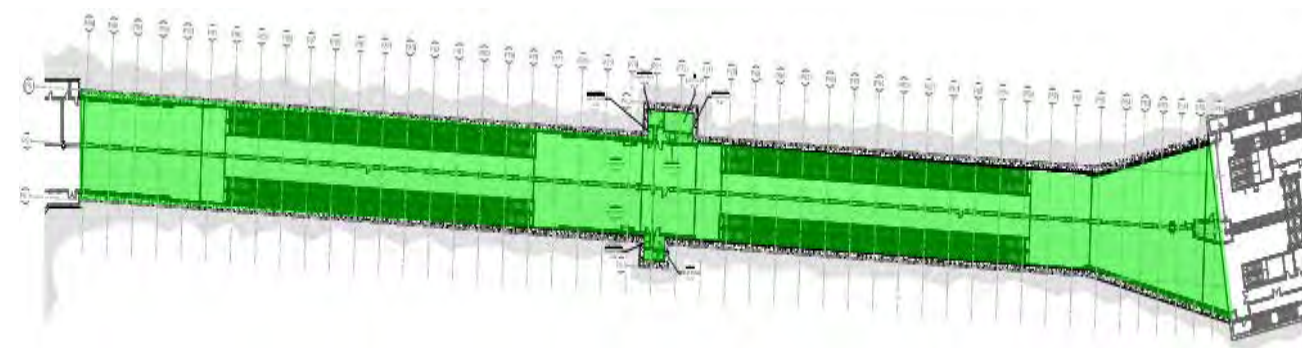
Upcoming Coordination:

- ☐ 05/14/2020: Review NNCs Ready for Inspection
- ☐ 05/20/2020: Walk MSC Concourse N8 to N4
- ☐ 05/22/2020: Walk MSC Apron N8 to N4

Gateway



TPAX

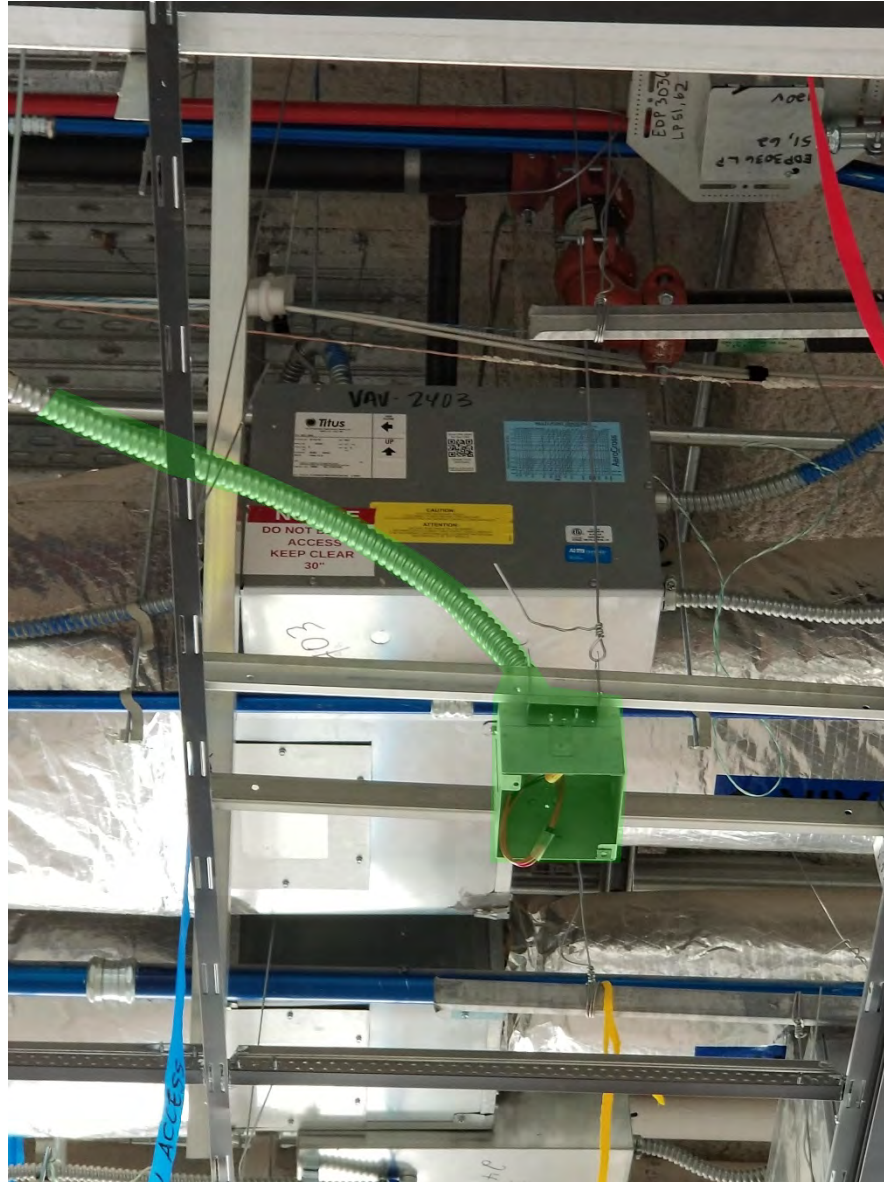


Areas Walked



Areas To Be Walked

Maintenance Access Update



Before



After

Project Component/Area	LAWA Estimated Date
Taxiway S (renamed Taxiway K) Open	March 28, 2020 <Actual>
Gate 132 Restore for Operation	May 20, 2020
Taxiway K and Gate 130 Closure (tentative)	May 4 - 18, 2020
Gate 131 Restore for Operation	June 5, 2020
Restore Gate 130 to Group VI	July 2020
Restore Gate 148 to Group VI	July 2020
North Tunnel Turnover to Vanderlande	October 2020
Gate 134 Restore for Operation	November 2020
BHS Operational	November 2020

Questions / Feedback

