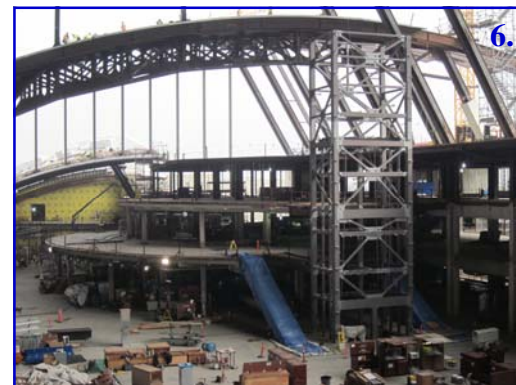




## Construction Photographs

1. Overall Project
2. Central Core Structural Steel
3. North Concourse Roof - Central Core Window Wall
4. Gate 134
5. Central Core - South
6. Central Core - Clock Tower
7. South Concourse - Sterile Corridor
8. North Concourse - Finished Ceiling



**TBITEC**

TBITEC  
380 World Way  
Box S - 18  
Los Angeles, CA 90045  
Phone: 310 - 646 - 9378  
Fax: 310 - 646 - 2981  
SITA: VNYLXCR

Published for TBITEC by:

**AvAirPros**

April 2012

Volume 6 Issue 4

## TBIT Construction News



**AvAirPros**

### Inside this issue:

Bradley West  
Construction Update **2**

Construction  
Photographs **3**

### Insert

New Face of the  
Central Terminal Area

## New Face of the CTA

A new project will be starting in the next 60 days that will have a significant impact on the roadway of Los Angeles International Airport (LAX). Major components of the "New Face of the Central Terminal Area" project include new light poles and a continuous light band around the upper roadway which will go all the way from Terminal 1 to 8. In addition to the modern design of the light poles and light band, the Tom Bradley International Terminal will receive a new main entrance canopy, escalator canopies, site furnishings and renovated upper level and lower level crosswalks. Designed to mimic aircraft wings, the main entrance canopy and light poles in front of TBIT are shown in the below rendering.

The New Face of the CTA project is conducting planning sessions to finalize the schedule, develop construction phases, coordinate road closures and minimize impacts to the Tom Bradley International Terminal operations. Construction may start as early as June of this year. CTA road closures and all other impacts to both airport and airline operations will be coordinated by LAWA. In the future, more detailed information shall be provided to the TBIT community in preparation for each construction phase.

This month's newsletter insert is dedicated to the New Face of the CTA project and has additional renderings and information.





## Bradley West Construction Progress

Los Angeles International Airport, specifically the Tom Bradley International Terminal skyline, has significantly changed in the last three months. The below photographs show the progress made on the Bradley West Project from January to April. The key progress to note on the two photographs are the following:

January 1, 2012

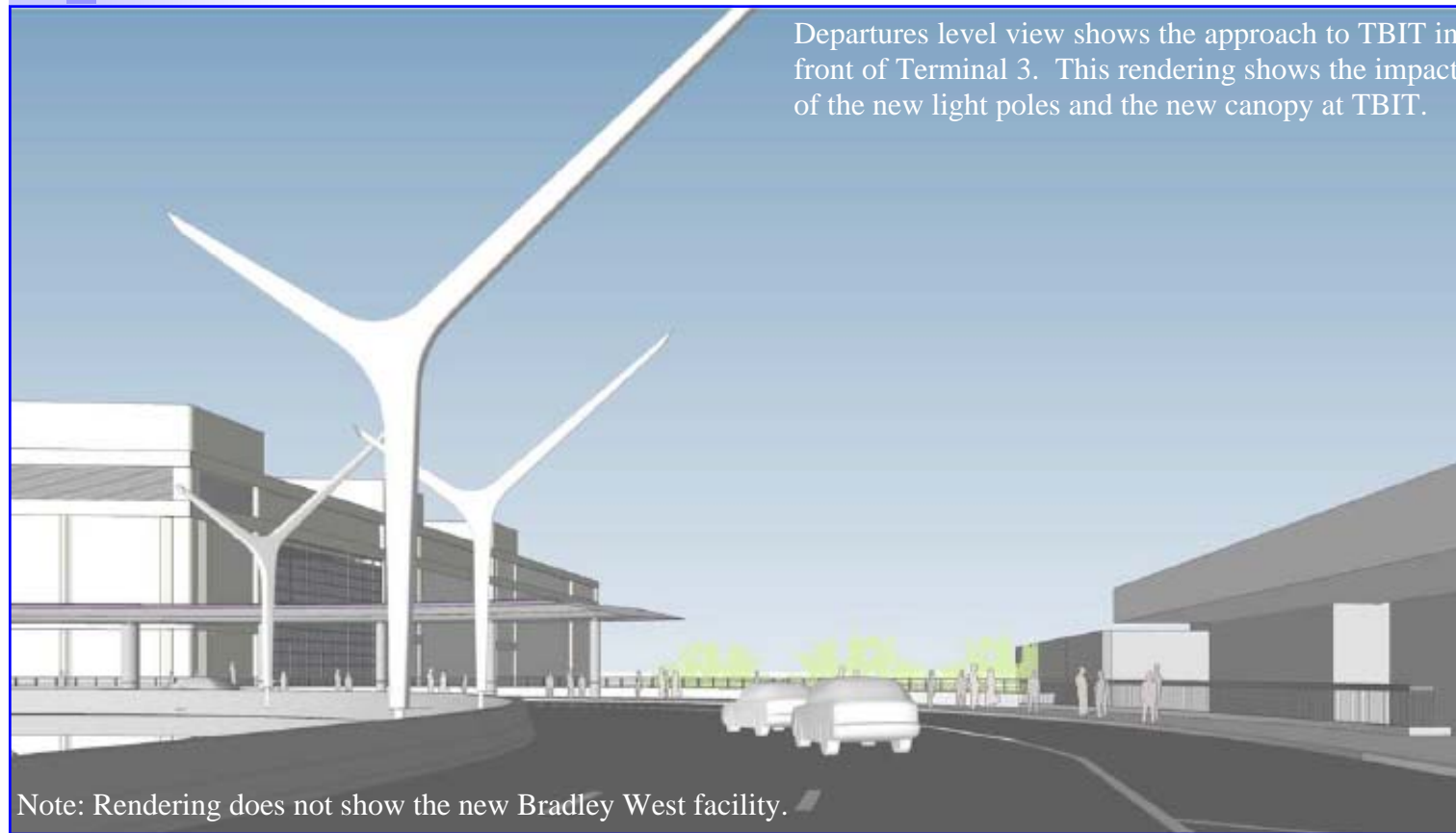
- Taxilane S Complete
- Roof Underlayment in North Concourse
- Gate Pier Glass Installation in North Concourse
- Central Core Structural Steel Erection On-Going

April 1, 2012

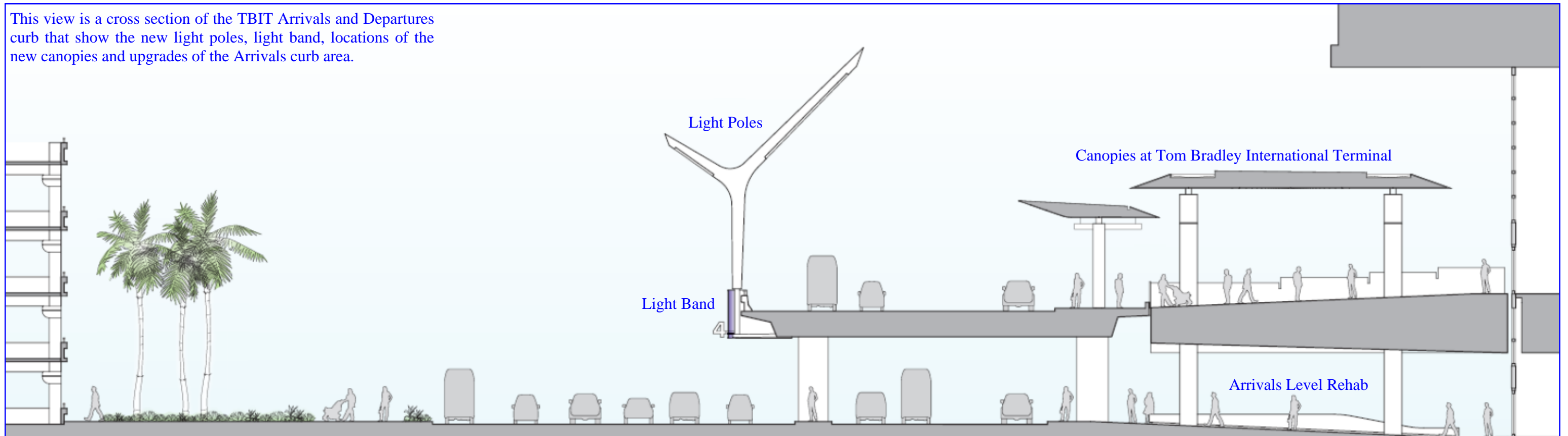
- Completion of Central Core Structural Steel
- North Concourse Finished Roof
- Gate Pier Glass Installation in South Concourse
- Removal of South Tower Crane







This view is a cross section of the TBIT Arrivals and Departures curb that show the new light poles, light band, locations of the new canopies and upgrades of the Arrivals curb area.





Each of these renderings depict the final look of the TBIT Arrivals and Departures levels upon completion of the New Face of the CTA project.



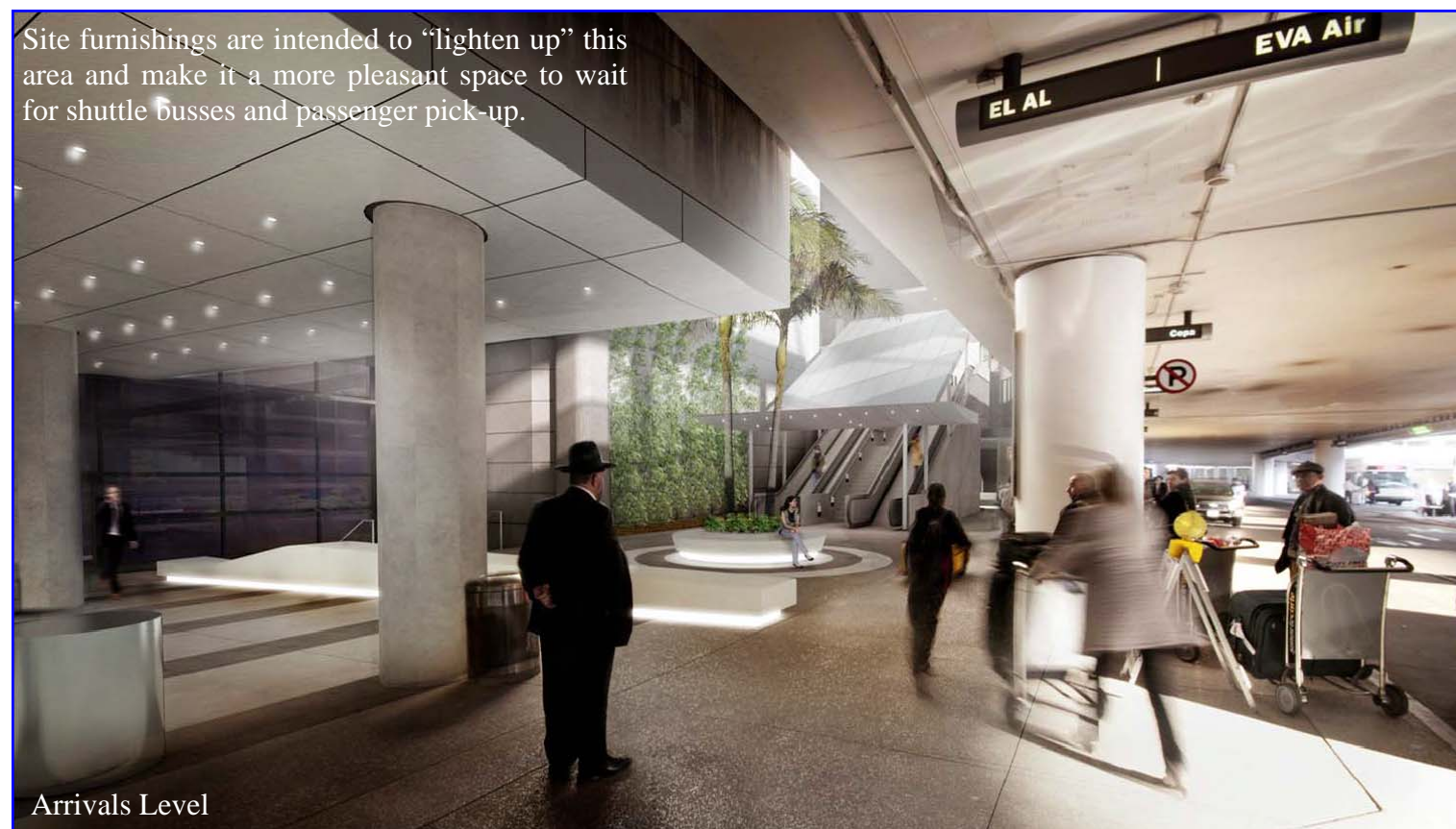
Departures Level

New light poles and canopies will enhance the front door appearance.



Departures Level

Site furnishings are intended to “lighten up” this area and make it a more pleasant space to wait for shuttle busses and passenger pick-up.



Arrivals Level



Arrivals Level