



Oversize/CTX Project Complete

As all TBIT Airlines are well aware, the existing Checked Baggage Inspection System and Baggage Handling System (CBIS/BHS) has had its share of problems. Bags frequently back-up to the ticket counters which results in delays to the arrival of screened bags to the sort piers. This on many occasions has resulted in flight delays and an increased number of bags that do not make the flights.

About a year ago TBITEC began to take emergency measures to improve the operational efficiency and increase the throughput capacity until the long term improvements could be implemented. One of these measures was to install additional bag screening capacity/contingency as cost effectively as possible. Working closely with the TSA, it was determined that additional baggage screening capacity could be created by adding two CTX-5500 Explosive Detection System (EDS) units and it was determined that the best location would be to install these machines at the base of each oversized conveyor located on the east side of the bag room, protected by bollards and out of the way of the tug traffic.

Now that these CTX-5500 EDS units are operational, the TSA personnel who staff the oversized locations will relocate down to the bag room. While the oversized conveyors will continue to support day-to-day operations and are primarily for oversized screening, these CTX-5500 EDS units are also intended to provide some operating contingency and additional screening capacity when the CBIS/BHS begins to back-up.

TBITEC

TBITEC
380 World Way
Box S - 18
Los Angeles, CA 90045
Phone: 310 - 646 - 9378
Fax: 310 - 646 - 2981
SITA: VNYLXCR

Published for TBITEC by:

AvAirPros



TBIT Construction News



AvAirPros

Inside this issue:

- Next Phase of the Bradley West Program **2**
- Oversize/CTX Project Complete **3**

Insert

Terminal 4
Connector Building

Terminal 4 Connector Project

The Terminal 4 Connector Project will produce a multi-use, multi-level facility including an airside passenger connection between TBIT and Terminal 4 (T4), a Checked Baggage Inspection System (CBIS) for T4, a new interline baggage transfer facility for TBIT, a five lane TSA Security Screening Check Point (SSCP) and a passenger bus port which will connect a passenger to other terminals via an airside bus.

The artist rendering on this page depicts the new connector building that will be built between TBIT and T4. The upper level will provide LAX with a facility that allows domestic to international connecting passengers easy access between T4 and TBIT on the secure side of the SSCP. This connector will tie into TBIT on the south side, through the fifth floor and will impact airline offices and conference room spaces.

On the lower level the international arriving passengers will be able to connect to domestic flights more easily with the ability to clear security in the new SSCP. Passengers connecting to domestic flights, upon exiting CBP, will be able to drop their bags in the interline re-check facility, enter the connector building, process through the SSCP and continue to either T4 or a bus port. Among other things, this project will impact TBIT by temporarily relocating the interline baggage carousel which will be reconstructed in its original place within the new T4 connector building.

This month's newsletter insert is dedicated to the new facility, which contains additional renderings and information about the project schedule. More detail and updates on the status of this project will be provided in future newsletters.



Next Phase of the Bradley West Program

So far the construction of the Bradley West Program has had minimal impact on TBIT operations. However, with the opening of the Central Core it is time for the next phase of construction to begin with expected impacts to both the ticketing lobby and old FIS hall. The next phase will demolish the existing concourses, open the east gates and complete a TBIT renovation program to support the Terminal 4 Connector Project and improve the passenger arrival experience in the CBP facility. Highlights include:

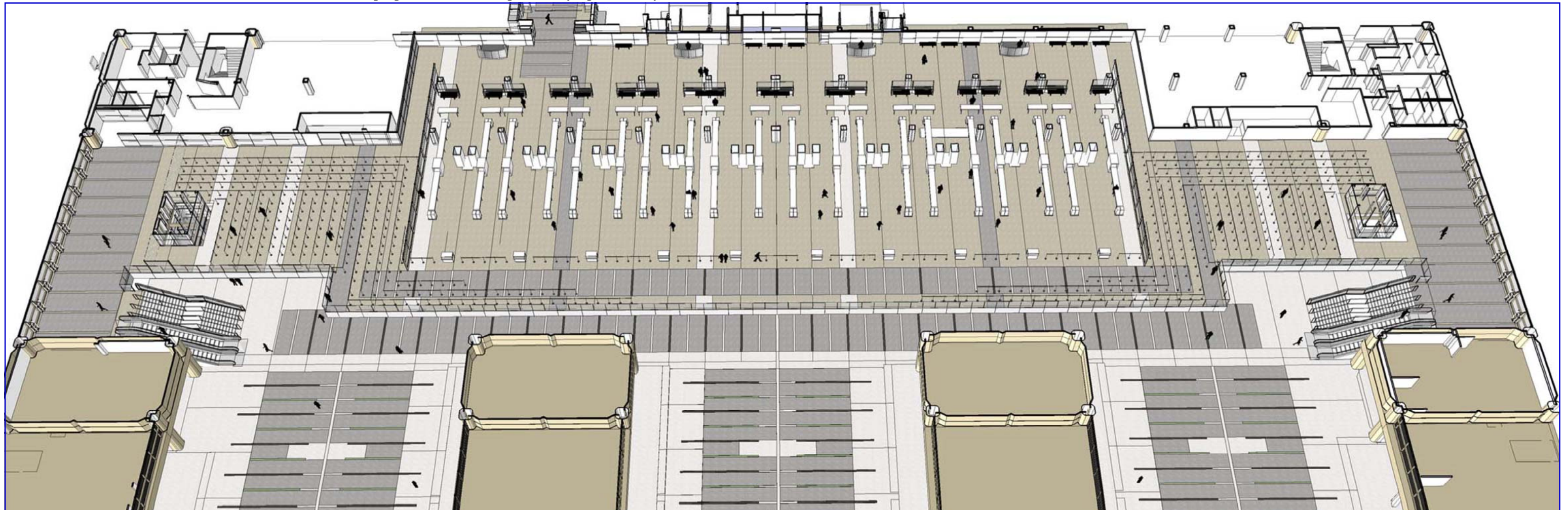
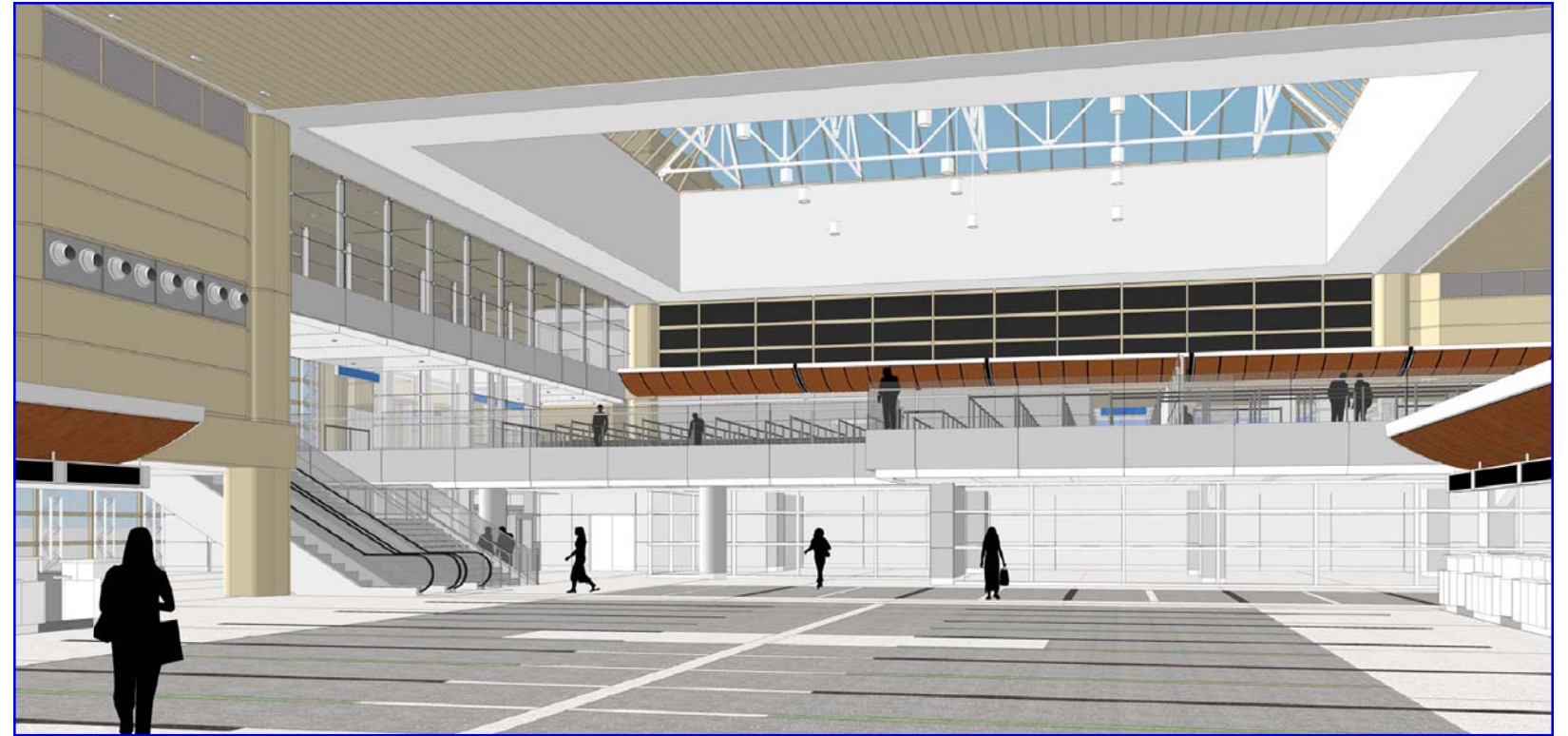
Concourse and East Ramp

- Demolition of the existing concourses
- Construction of the Fuel System and complete rebuild of the east apron and aircraft parking areas
- Installation of the Passenger Boarding Bridges (PBB) and associated ramp equipment and
- Extension of the Ramp Services Management System (RSMS)
- CUTE Testing and EVIDS Commissioning

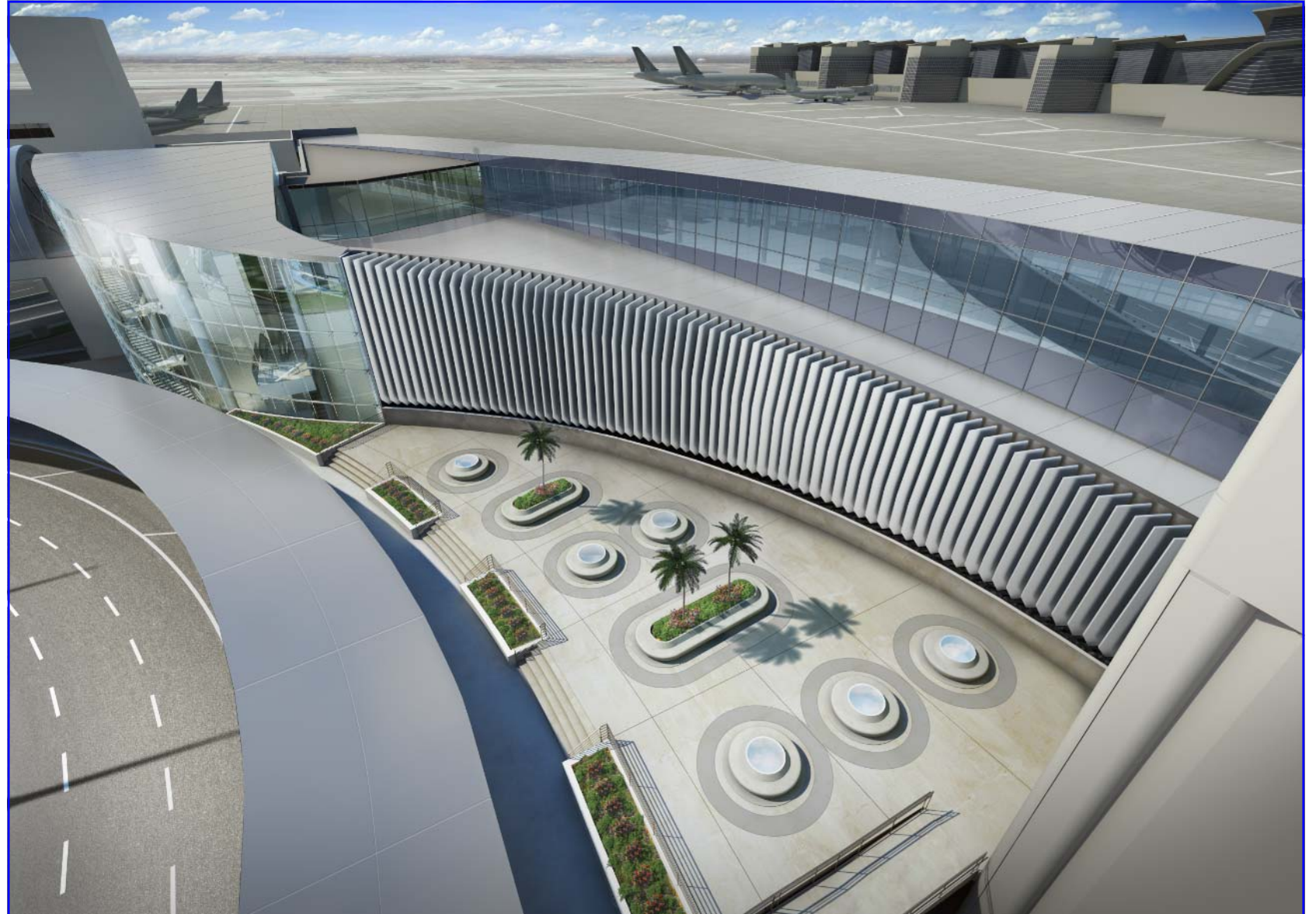
Terminal Renovation

- Reconstruction of the ticketing lobby mezzanine level including new stairs, escalators and elevators.
- Consolidation of the TSA Security Screening Check Point (SSCP) on the mezzanine level
- Connection to Terminal 4 via passenger bridge at the fifth level
- Renovation of the existing baggage claim devices
- Modernization of the CBP Secondary Facility

Starting soon, the remaining concessions in the TBIT ticketing lobby will begin to close and demolition of the South Concourse could start as early as December 2013. It is important to note that the same construction team who worked very well with the TBIT community on the previous TBIT Renovation project, Clark McCarthy Joint Venture (CMJV), will be the contractor on this next phase of construction. All work is scheduled to be complete by June 2015 in preparation for the Special Olympics in July of 2015.



Terminal 4 Connector Building



ID	Task Name	Finish	2014												2015															
			N	D	J	F	M	A	M	J	J	A	S	O	N	D	J	F	M	A	M	J	J	A	S	O	N	D	J	F
1	Terminal 4 Connector Project Milestone Schedule	Fri 12/4/15																												
2	Install Landside Barricades	Fri 11/15/13	◆ 11/15																											
3	Temporary Interline Baggage Carousel Operational	Mon 1/6/14	◆ 1/6																											
4	Termina 4 - Gate 41 Complete	Fri 5/16/14	◆ 5/16																											
5	Structural Steel Complete	Fri 8/1/14	◆ 8/1																											
6	Connector Walkway Roof Complete	Fri 11/28/14	◆ 11/28																											
7	New Interline Baggage Carousel Operational	Mon 3/2/15	◆ 3/2																											
8	World Way Plaza Open	Fri 3/20/15	◆ 3/20																											
9	Bus Port Complete	Fri 5/8/15	◆ 5/8																											
10	TSA Security Screening Check Point In Use	Fri 9/18/15	◆ 9/18																											
11	T4 Checked Baggage Inspection System Operational	Mon 11/30/15	◆ 11/30																											
12	Project Complete	Fri 12/4/15	◆ 12/4																											

