

MSC Project Update

Stakeholder Meeting
September 5, 2019

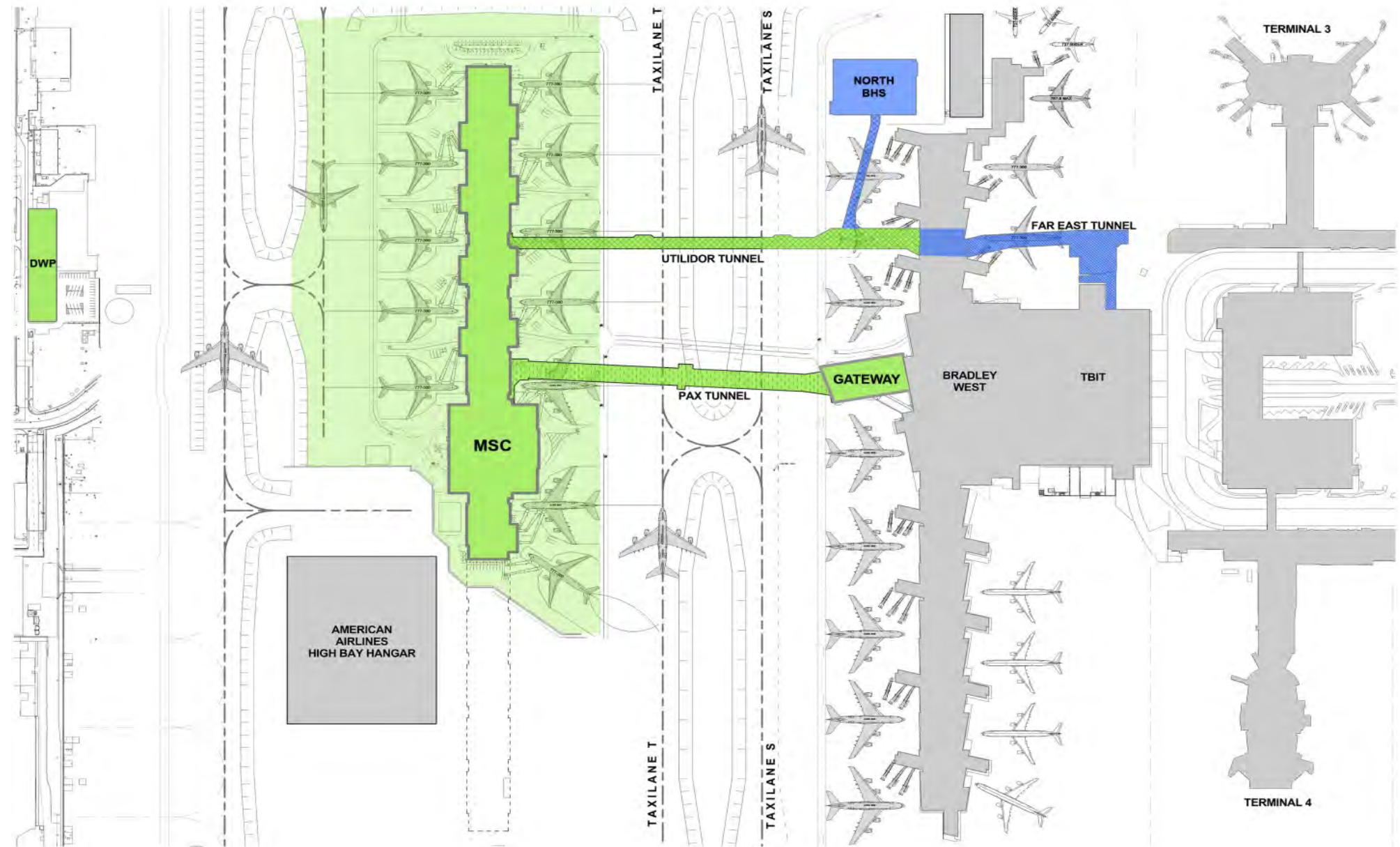
MSC - Project Components

MSC Project

1. MSC Concourse - 15 Gates
2. Gateway
3. PAX Tunnel
4. Utilidor / Crossover Tunnel
5. Taxilanes & Apron
6. DWP Substation

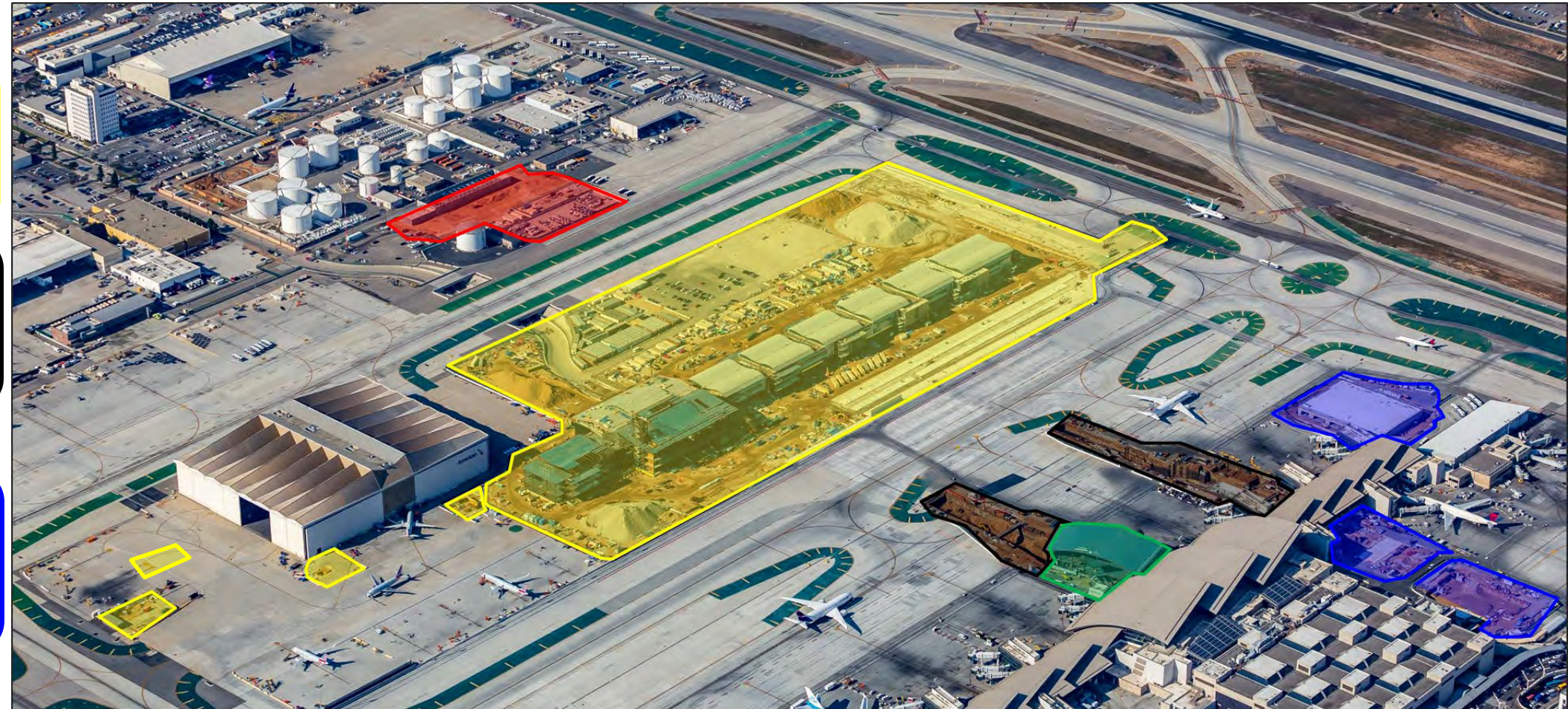
Baggage Optimization Project (BOP)

1. Far East Tunnel
2. North BHS Structure
3. North Tunnel



Updates by Geography

- ☐ MSC
 - ☐ Concourse
 - ☐ Civil
- ☐ Tunnels
 - ☐ TPAX
 - ☐ Utilidor
- ☐ Gateway
- ☐ BOP
 - ☐ BOP NBHS (IWBT)
 - ☐ BOP Far East Tunnel (Gate 131)
- ☐ BHS

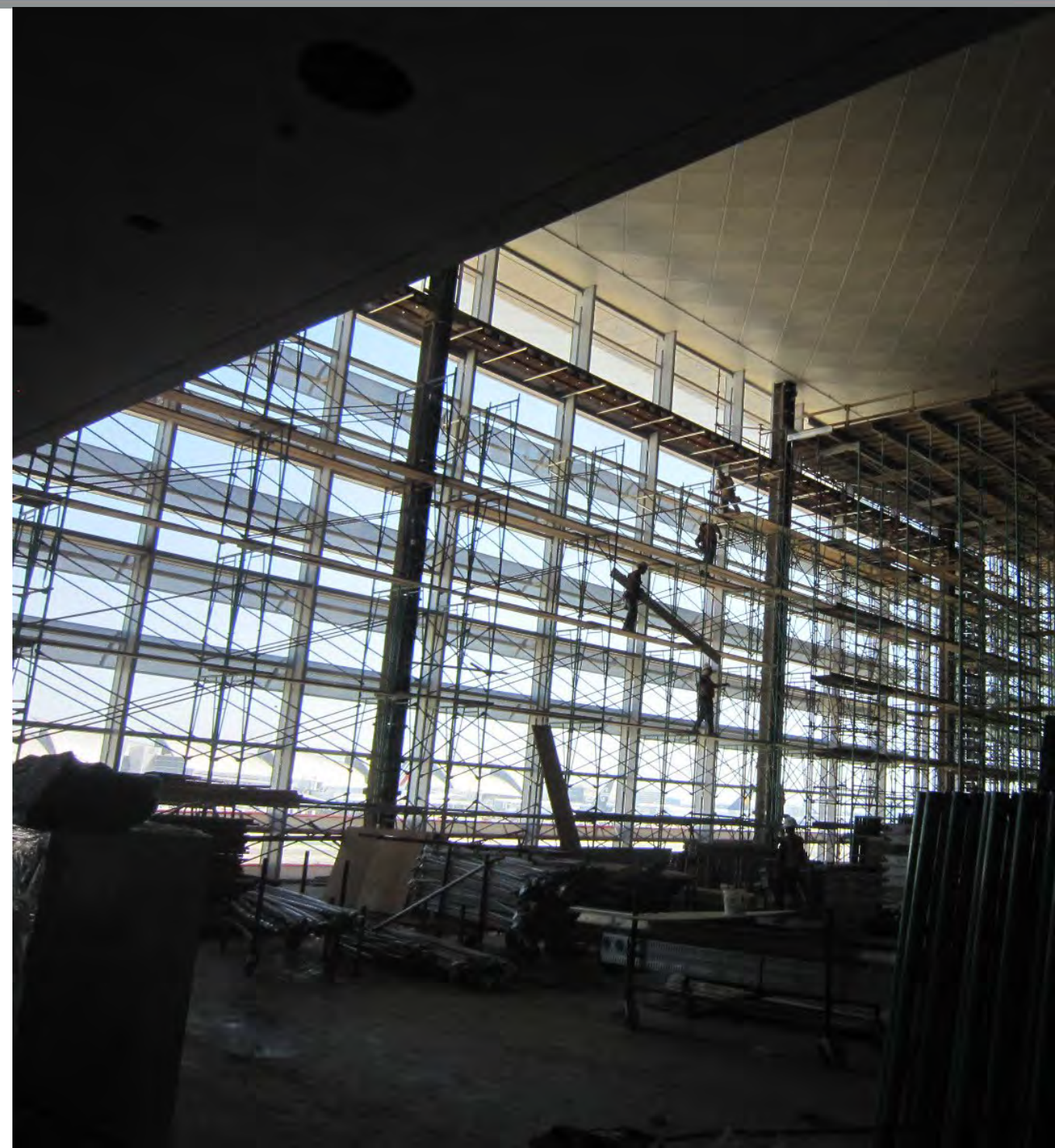
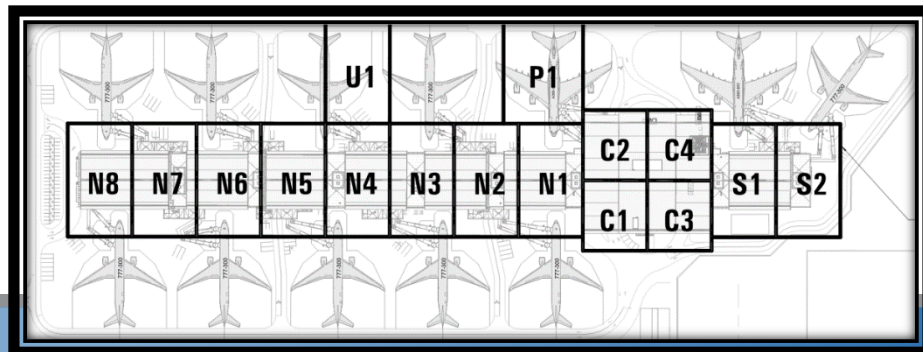


General Updates / Progress:

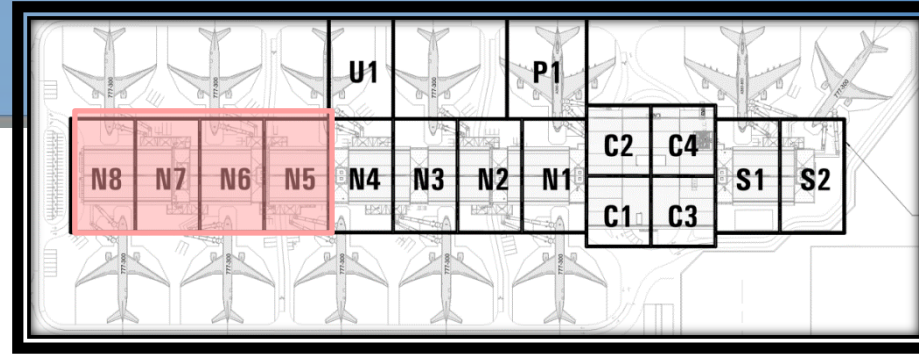
- ☐ Metal panel installation continues at Core & Gatehouses
- ☐ Mechanical units are circulating conditioned air at concourse N5 - N8
- ☐ Stone Veneer Mock-up conducted at Core Elevators
- ☐ Square Column Cover Mock-up conducted at Club Level - C4
- ☐ Barricades have been erected on Concourse level for Group III scope of work (N8 & N7).
- ☐ Terrazzo continues at C1 & C2
- ☐ Scaffold coming down at C2 & C4

Upcoming / Ongoing Coordination:

- ☐ Field coordination for DAS Cellular scope of work
- ☐ Group III construction coordination & scheduling ongoing
- ☐ Continued Early Baggage turnover coordination meetings with Vanderlande / TPJV
- ☐ URW's utility access coordination in tenant space is ongoing



MSC Concourse



Group III: Demo of Metal Panels at Exit Stairs (N8-East)



Group III: Foundation Work at N8-East Exit Sairs



Conditioned Air Blowing at North end of Concourse. Getting Ready for Wood Ceiling Climatization



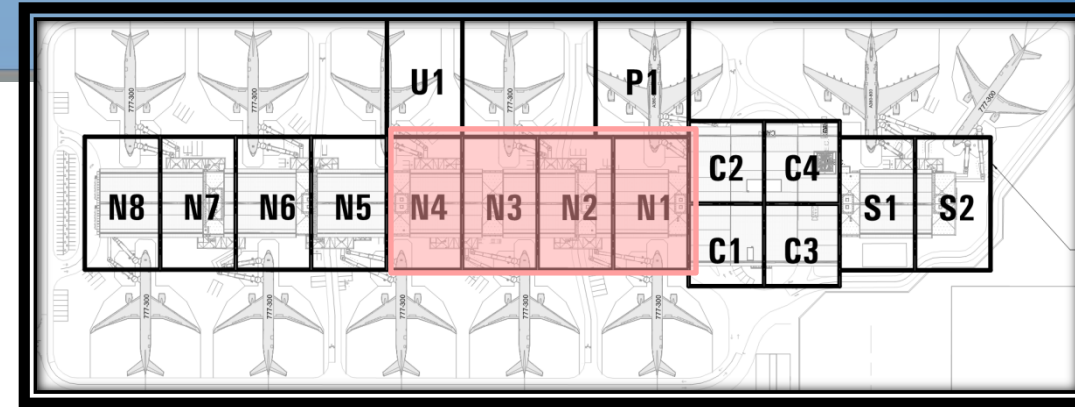
Group III Barricade at N8-East Exit Stairs



Group III Barricade at N7



Expansion Joint Cover Installation at G204



Exterior Column Cover Concrete Encasement Ongoing at G204



Concession Neutral Frame Installation Progressing

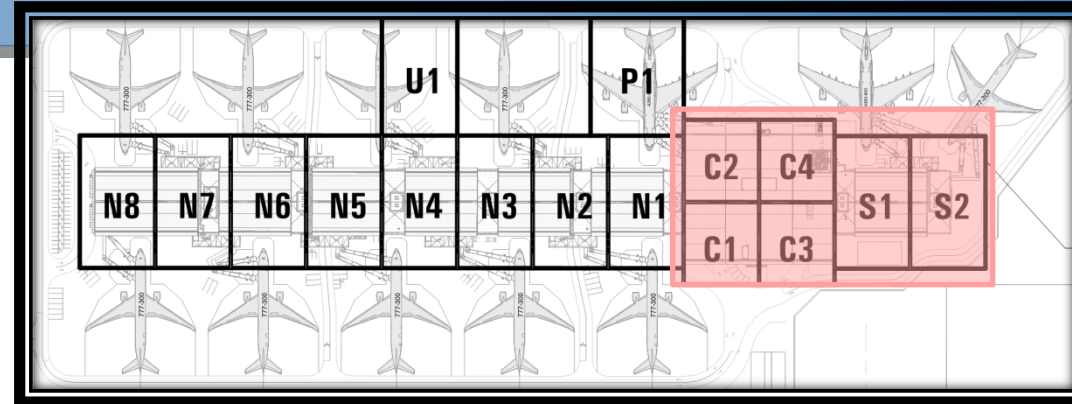


G204 Interior Finishes Progressing: Phenolic, Corner Guards



Gyp board Finishes Progress at Cross Over Bridge

MSC Concourse



Man-lift Removed, Metal Panel Installation Proceeding



Metal Panel Installation Ongoing



Exit Stair Installation at S2-West



Elevator Guide Rails Installation at C2 - Apron



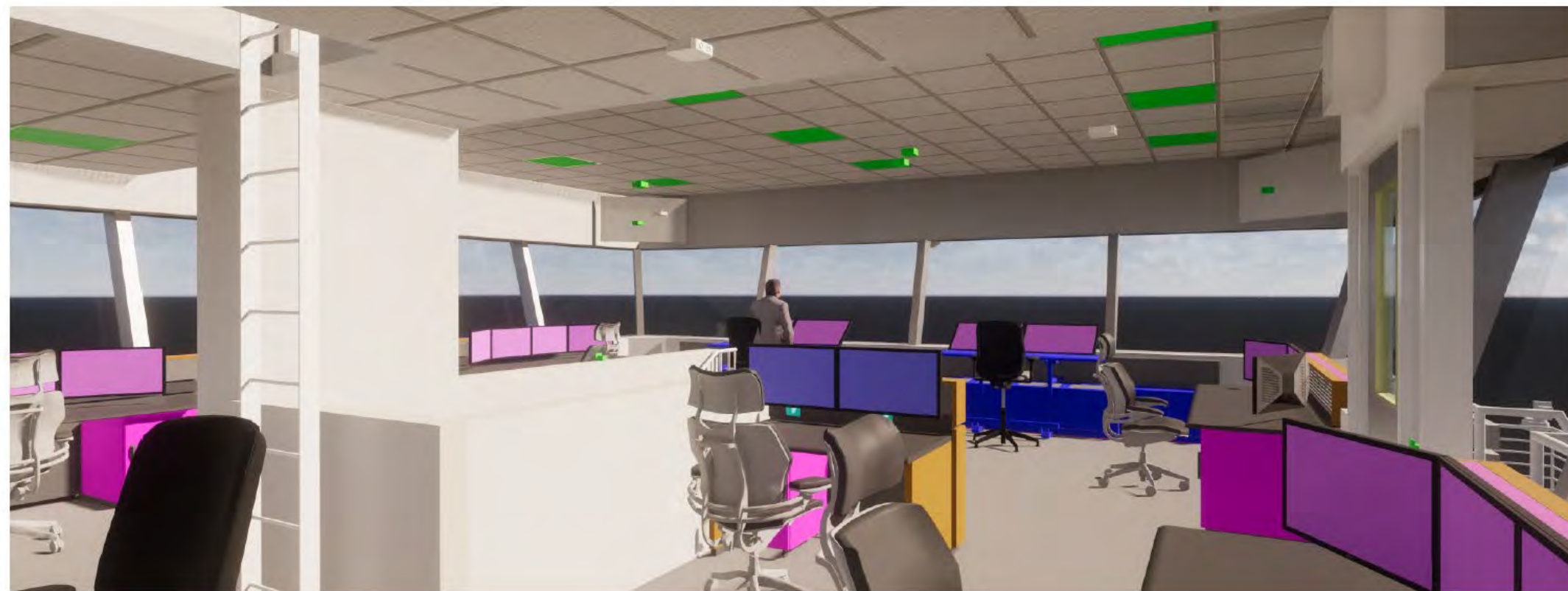
Terrazzo at C1 & C3 Ongoing

General Updates / Progress:

- ☐ Implementation Phase - Design Phase is complete
- ☐ Next milestones are furniture Notice to Fabricate and Equipment order
- ☐ Page turn for Furniture Submittal is 9/17/2019

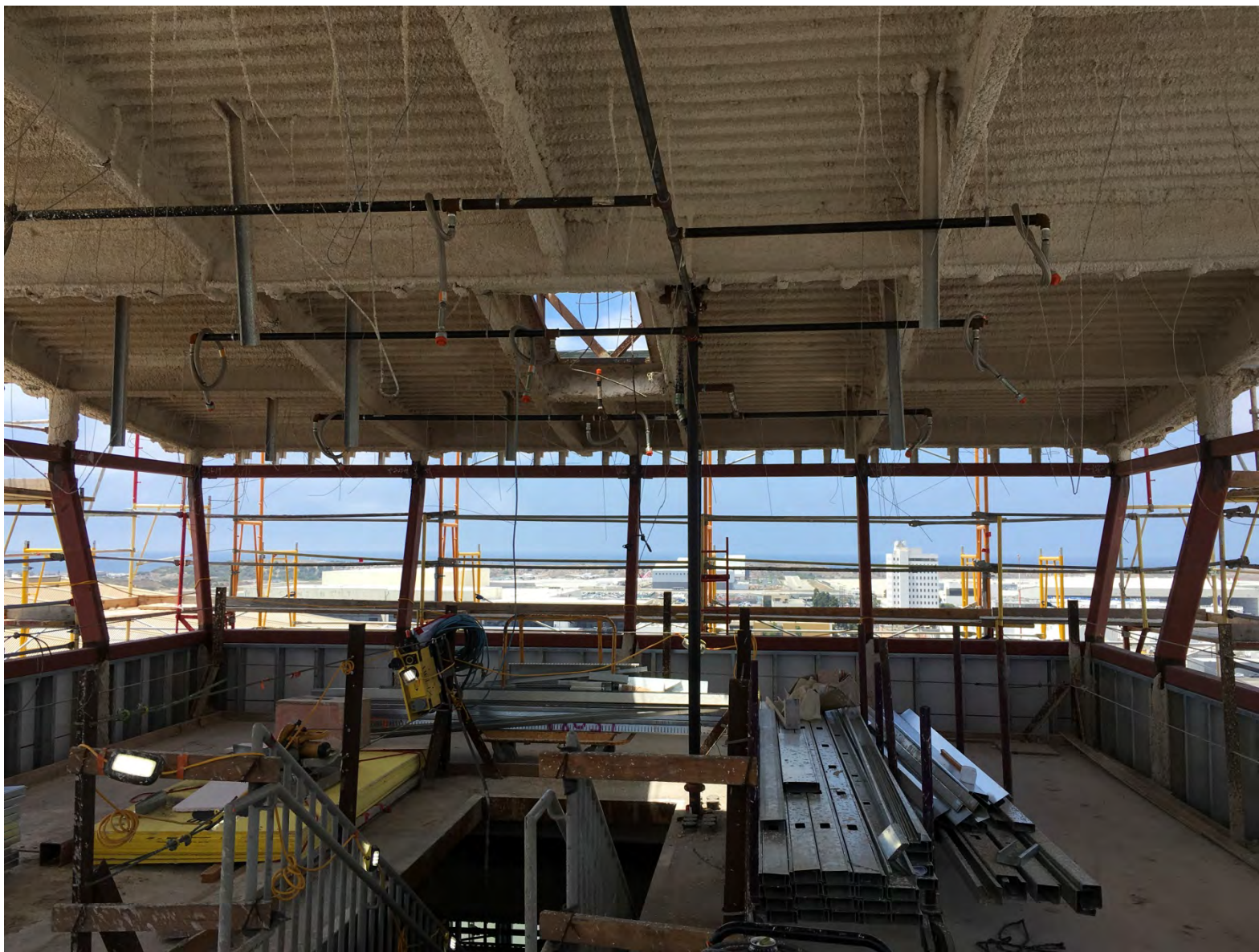
Upcoming Coordination:

- ☐ Ongoing communication with Airport Ops and FAA



Ramp Control Tower View - Looking East

MSC Ramp Control Tower

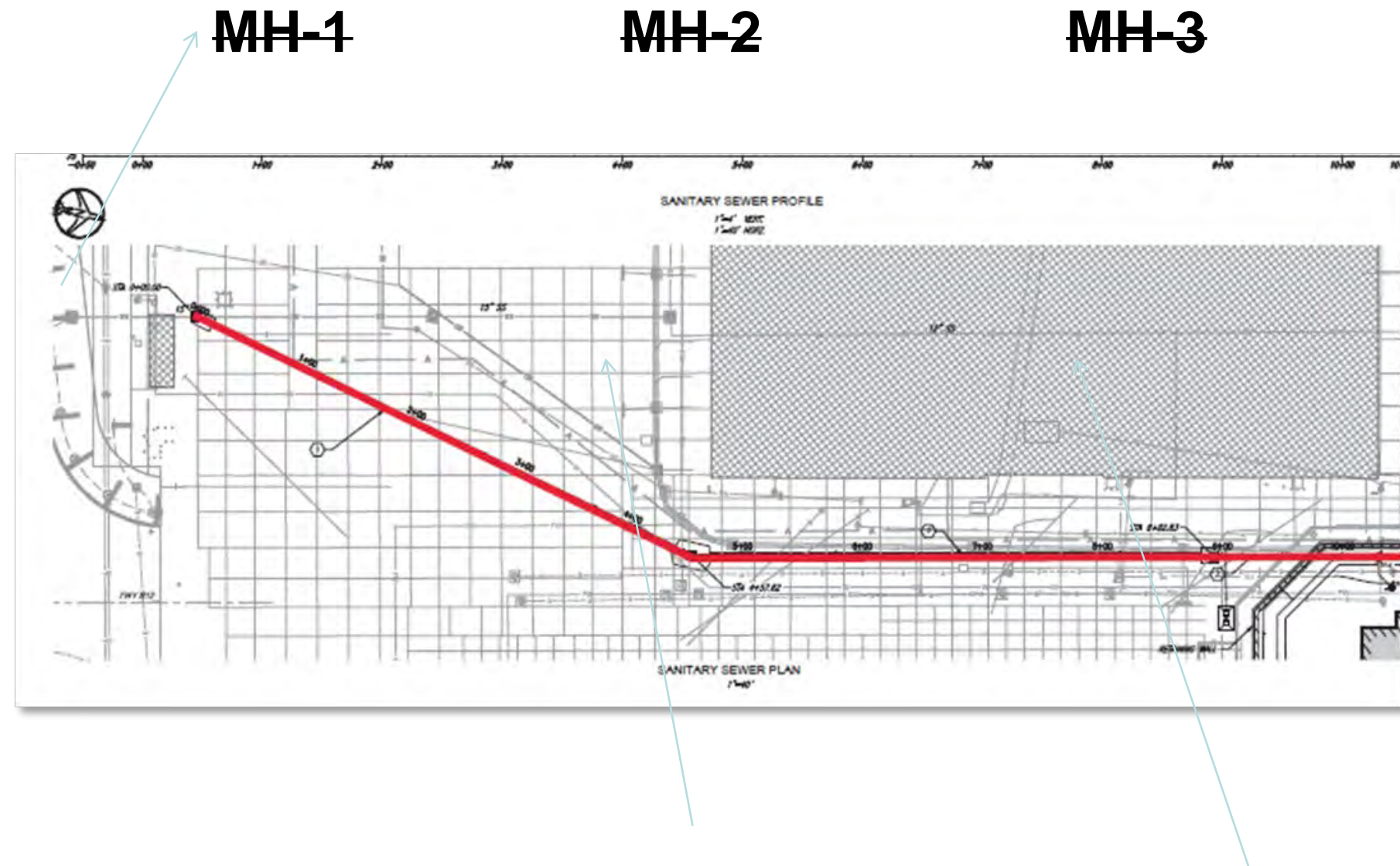


General Updates:

☐ COMPLETED

Upcoming Coordination:

None



MSC Civil – South Fence Relocation

General Updates:

- ☐ Fence relocation removes RON E6
- ☐ Begin installation of new fence first week of Sep 2019

Upcoming Coordination:

As Needed



MSC Civil – South Fence Relocation



Updates by Geography

- ☐ MSC
 - ☐ Concourse
 - ☐ Civil
 - ☐ Tunnels
 - ☐ TPAX
 - ☐ Utilidor
- ☐ Gateway
- ☐ BOP
 - ☐ BOP NBHS (IWBT)
 - ☐ BOP Far East Tunnel (Gate 131)
- ☐ BHS



General Updates:

- ❑ Waterproofing continues at exterior
- ❑ Backfill continues over tunnel
- ❑ Framing continues inside tunnel
- ❑ Overhead MEPs begin in tunnel
- ❑ Fire Water Main over tunnel
- ❑ Jet Fuel IVP at South VSR
 - ❑ Coordinating with Operations

Upcoming Coordination:

- ❑ Temporary VSR Phasing Plan
 - ❑ Planned Activation: 9/23/19

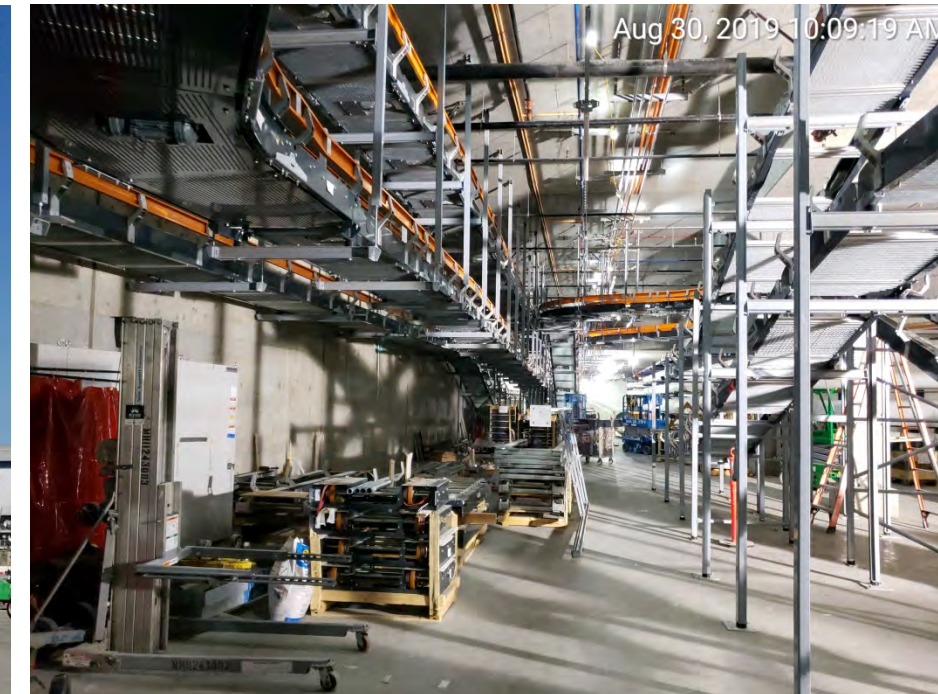


General Updates:

- ☐ VI conveyor install continues
- ☐ AOA Security wall relocation
 - ☐ Turnover to VI 9/23
 - ☐ ACAMS activation TBD
- ☐ 18" Jet Fuel Line Tie-in
 - ☐ Complete
- ☐ Taxiway Airfield Paving
 - ☐ Continues

Upcoming Coordination:

None at this time



Utilidor Crossover Tunnel (Gate 132)

General Updates

- ☐ Electrical Room installation
- ☐ VI Continues BHS Install
- ☐ North tunnel Stub
 - ☐ Waterproofing
 - ☐ Backfill
- ☐ Utilities above tunnel continue
 - ☐ Sanitary Sewer
 - ☐ Storm Drain
 - ☐ Jet Fuel

Upcoming Coordination:

None at this time



Updates by Geography

- ☐ MSC
 - ☐ Concourse
 - ☐ Civil
- ☐ Tunnels
 - ☐ TPAX
 - ☐ Utilidor
- ☒ Gateway
- ☐ BOP
 - ☐ BOP NBHS (IWBT)
 - ☐ BOP Far East Tunnel (Gate 131)
- ☐ BHS



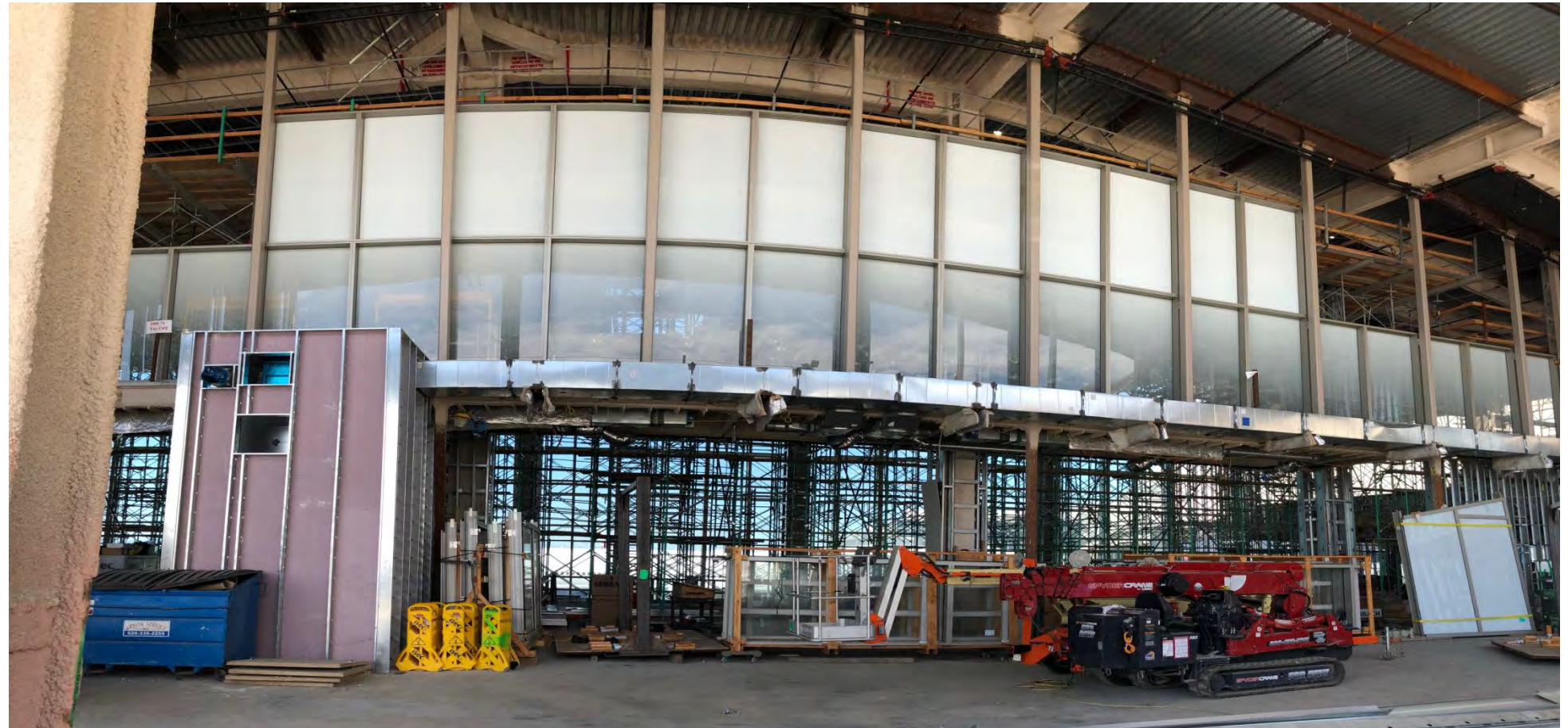
Gateway - New Construction

General Update:

- ☐ Curtain Wall Install - West Complete
- ☐ Interior Curtain Wall - Ongoing
- ☐ OH MEP Continues
- ☐ Electrical and IT Room Drywall
- ☐ T-Bar Grid at High Ceiling
- ☐ Apron flatwork Concrete Pour

Upcoming Coordination:

- ☐ Apron Paving Plan - Next Week



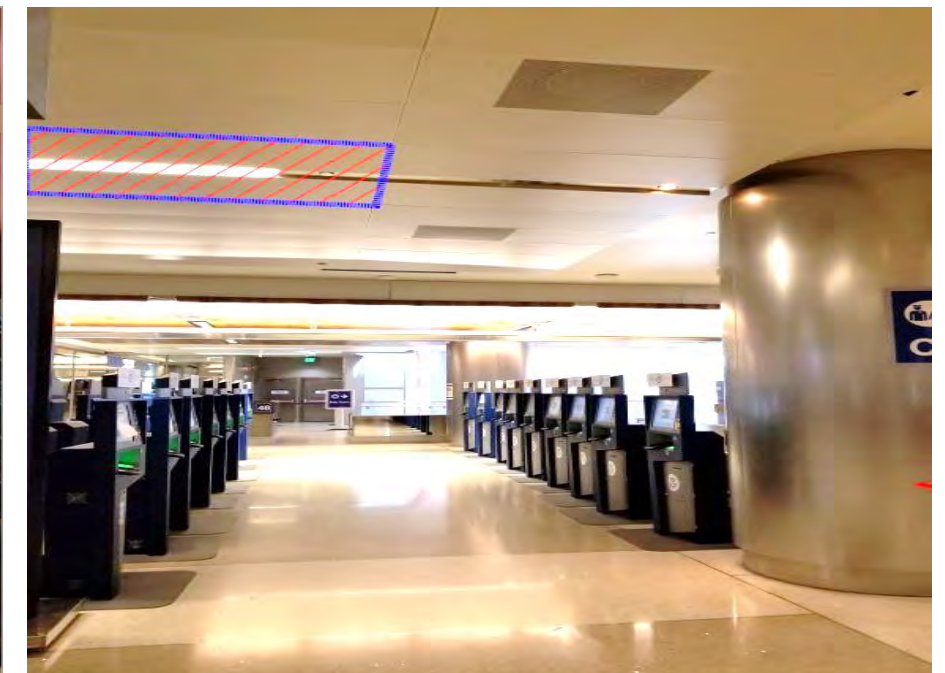
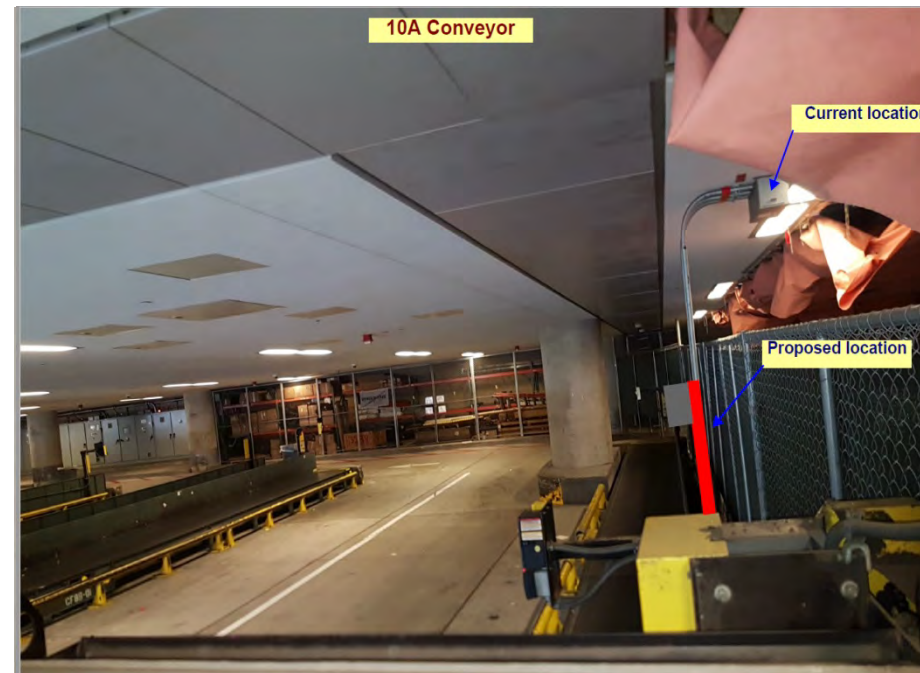
Gateway - Remodel Construction

General Update:

- ☐ NOCC - Coring at Interstitial Stairwell
 - ☐ Ceiling Framing Removed
 - ☐ Coring 9/23
- ☐ Firewater Tie-In
 - ☐ Work on-going
- ☐ Pylon Signage Investigation
 - ☐ Complete

Upcoming Coordination:

- ☐ Conveyor 10A - Electrical Mods
- ☐ Chilled Water Tie-in Investigation



Updates by Geography

- ☐ MSC
 - ☐ Concourse
 - ☐ Civil
- ☐ Tunnels
 - ☐ TPAX
 - ☐ Utilidor
- ☐ Gateway
- ☐ BOP
 - ☐ BOP NBHS (IWBT)
 - ☐ BOP Far East Tunnel (Gate 131)
- ☐ BHS



General Updates:

- ☐ Bollards (East & West) vacuum/drilling complete
- ☐ Tie-in to Bradley for underground utilities
 - ☐ Normal Power
 - ☐ Vault Set
 - ☐ TBIT Connection on hold
 - ☐ RFI pending (Elev. Issue)
 - ☐ Emergency Power
 - ☐ Hand hole set
 - ☐ NBHS connection on hold
 - ☐ RFI pending (Pull boxes on the way)
- ☐ Communication Line Trenching - Sep 9
- ☐ Domestic Water Line Trenching - Sep 12
- ☐ Sewer point of connection

Upcoming Coordination:

- ☐ USR/ASR coordination for upcoming utility tie-ins
 - ☐ Power Shut Downs



BOP Far East Tunnel (Gate 131)

General Update:

- ☐ Area 1
 - ☐ Site Utilities - Ongoing
- ☐ Area 2
 - ☐ Tunnel Waterproofing - Complete
 - ☐ Tunnel Backfill - Ongoing
 - ☐ MEP in the tunnel E2.4 - Ongoing
 - ☐ Site Utilities - Ongoing
- ☐ Area 3
 - ☐ CW/HW Piping Tie-in - Ongoing
 - ☐ TBIT Connector - Stairway Handrail - Complete
 - ☐ TBIT Connector- Interior Finishing work - Ongoing

Upcoming Coordination:

- ☐ Chilled & Hot Water Piping Cutover



BOP Far East Tunnel (Gate 131)



Area 2 - Tunnel E2.4 MEP Work



Area 2 - Tunnel E2.4 Backfill

BHS - MSC and West Tunnel

General Updates:

- ☐ Mechanical Installation:
 - ☐ West Tunnel - 95% (E)
 - ☐ MSC Basement - 98% (+1)
 - ☐ MSC Apron - 95% (+3)
- ☐ Electrical Installation:
 - ☐ East/West Tunnel - 30% (E)
 - ☐ MSC Apron/Basement - 41% (+7)

Upcoming Coordination:

- ☐ IT Room access is being coordinated
- ☐ Tunnel Commissioning 12/04/2019

MSC Apron N4 Fire Door Installation



General Updates:

☐ Mechanical Installation:

- ☐ NBHS Basement - 85% (+3)
- ☐ NBHS Apron - 79% (-6)
- ☐ Mixing Box - 38% (E)
- ☐ East Tunnel - 96% (+1)
- ☐ Crossover - 12% (+6)
- ☐ Far East - 38% (+9)

☐ Electrical Installation:

- ☐ NBHS Apron/Basement - 1%
- ☐ Cross/Chute/FET/Mixing Box - TBD

Upcoming Coordination:

U3 Fire/Security Door - 9/07/2019

TBIT Connector Access point - 11/02/2019

Overall Complete:

Mechanical - 72.07% (+4.5)

Electrical - 16% (+1.8)

Crossover Tunnel Conveyor Installations



Maintenance Access Update

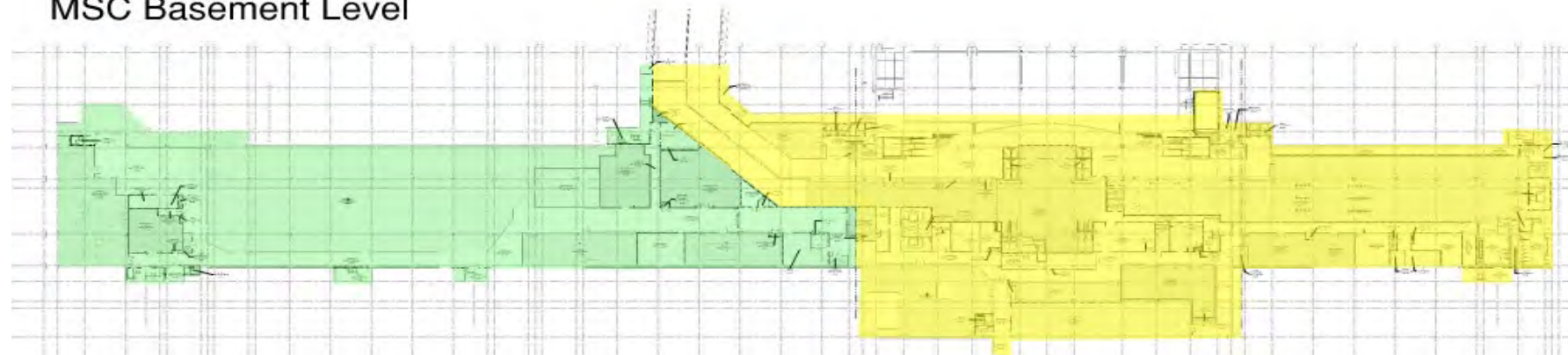
General Update:

- ☐ MSC Basement Level:
 - ☐ Open: 0 Closed: 0
- ☐ MSC Concourse Level:
 - ☐ Open: 22 Closed: 31

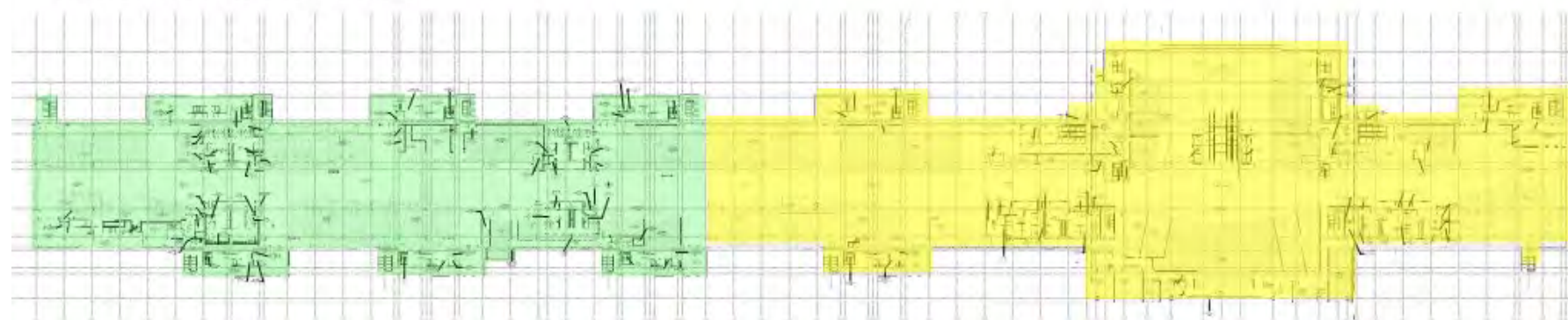
Upcoming Coordination:

- ☐ 9/11/2019: Walk areas N7-N5 Apron Level
- ☐ 9/18/2019: Walk area N4-N1 Apron Level
- ☐ 9/25/2019: Walk Utilidor West

MSC Basement Level



MSC Concourse Level



- ☐ Areas Walked
- ☐ Areas To Be Walked

Maintenance Access Update

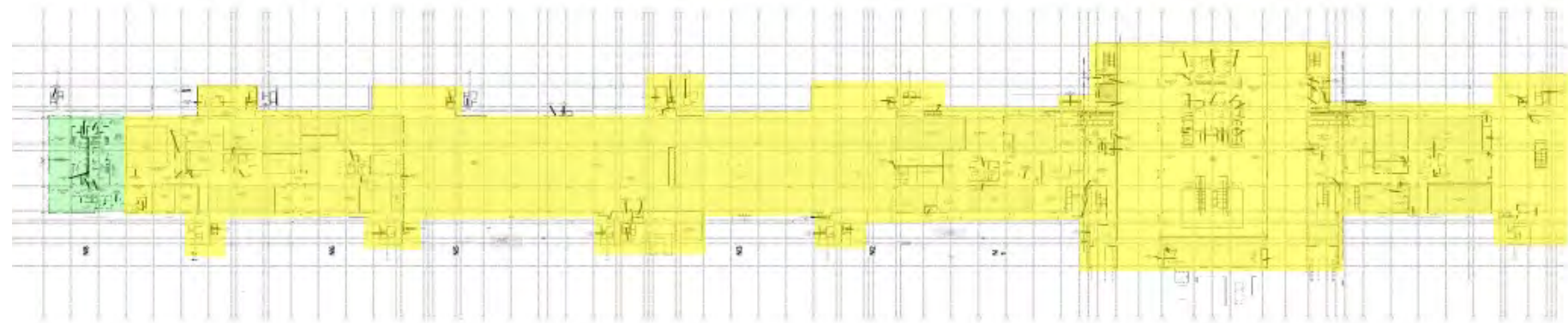
General Update:

- ☐ MSC Apron Level:
 - ☐ Open: 3 Closed: 7
- ☐ MSC Sterile Level:
 - ☐ Open: 0 Closed: 0

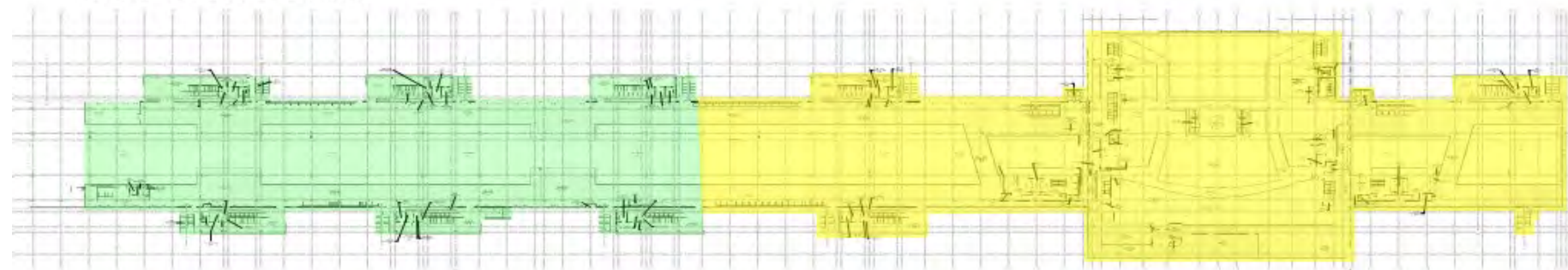
Upcoming Coordination:

- ☐ 9/11/2019: Walk areas N7-N5 Apron Level
- ☐ 9/18/2019: Walk area N4-N1 Apron Level
- ☐ 9/25/2019: Walk Utilidor West

MSC Apron Level



MSC Sterile Level



- ☐ Areas Walked
- ☐ Areas To Be Walked

Maintenance Access Update

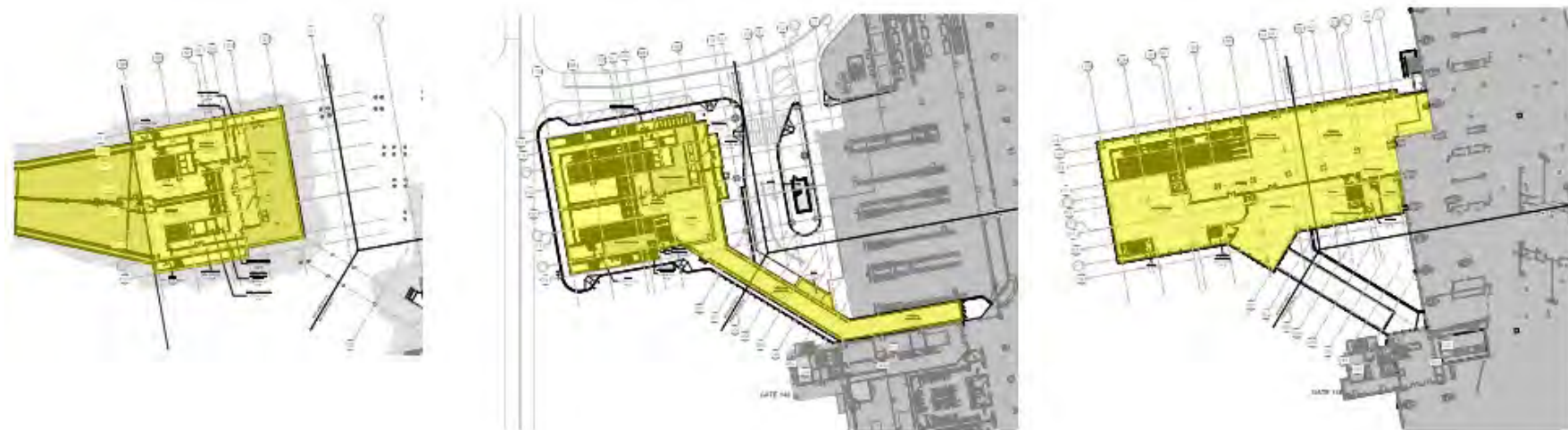
General Update:

- ☐ Gateway - All Levels:
 - ☐ Open: TBD Closed: TBD
- ☐ PAX Tunnel:
 - ☐ Open:0 Closed:0

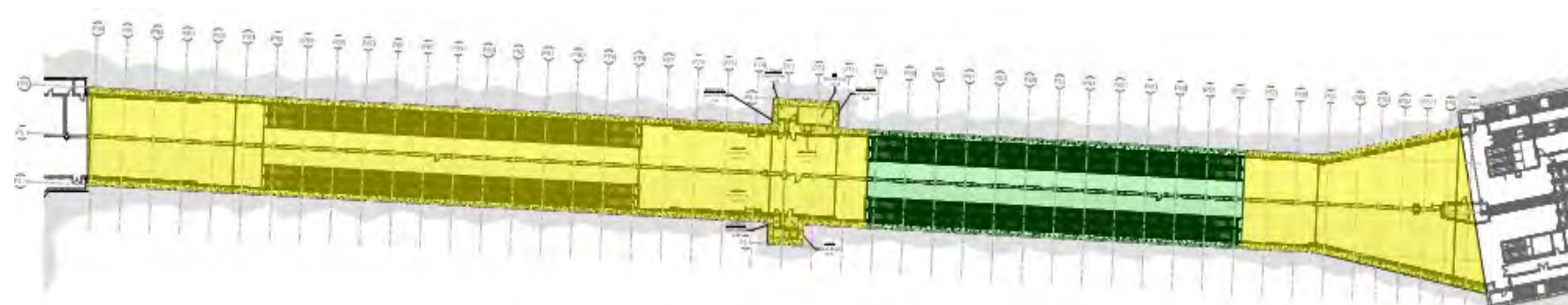
Upcoming Coordination:

- ☐ 9/11/2019: Walk areas N7-N5 Apron Level
- ☐ 9/18/2019: Walk area N4-N1 Apron Level
- ☐ 9/25/2019: Walk Utilidor West

Gateway – All Levels



PAX Tunnel



- Areas Walked
- Areas To Be Walked

Maintenance Access Update

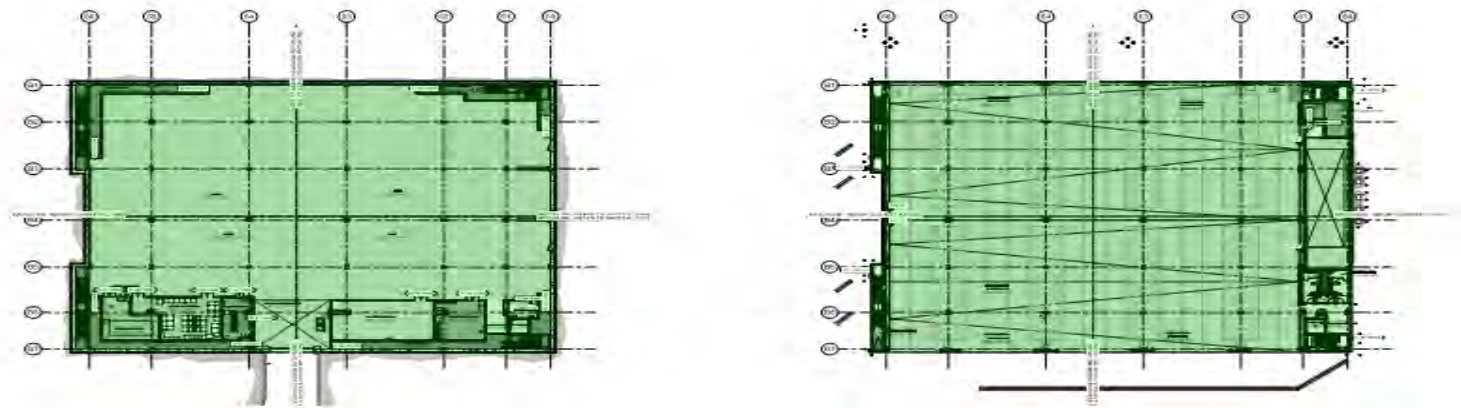
General Update:

- ☐ NBHS - All Levels:
 - ☐ Open: 0 Closed: 0
- ☐ LADWP:
 - ☐ Open: 0 Closed: 1

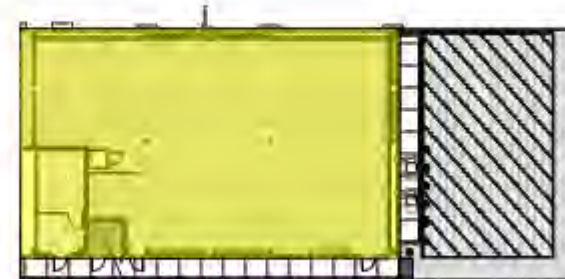
Upcoming Coordination:

- ☐ 9/11/2019: Walk areas N7-N5 Apron Level
- ☐ 9/18/2019: Walk area N4-N1 Apron Level
- ☐ 9/25/2019: Walk Utilidor West

NBHS – All Levels



LADWP



- Areas Walked
- Areas To Be Walked

Maintenance Access Update

General Update:

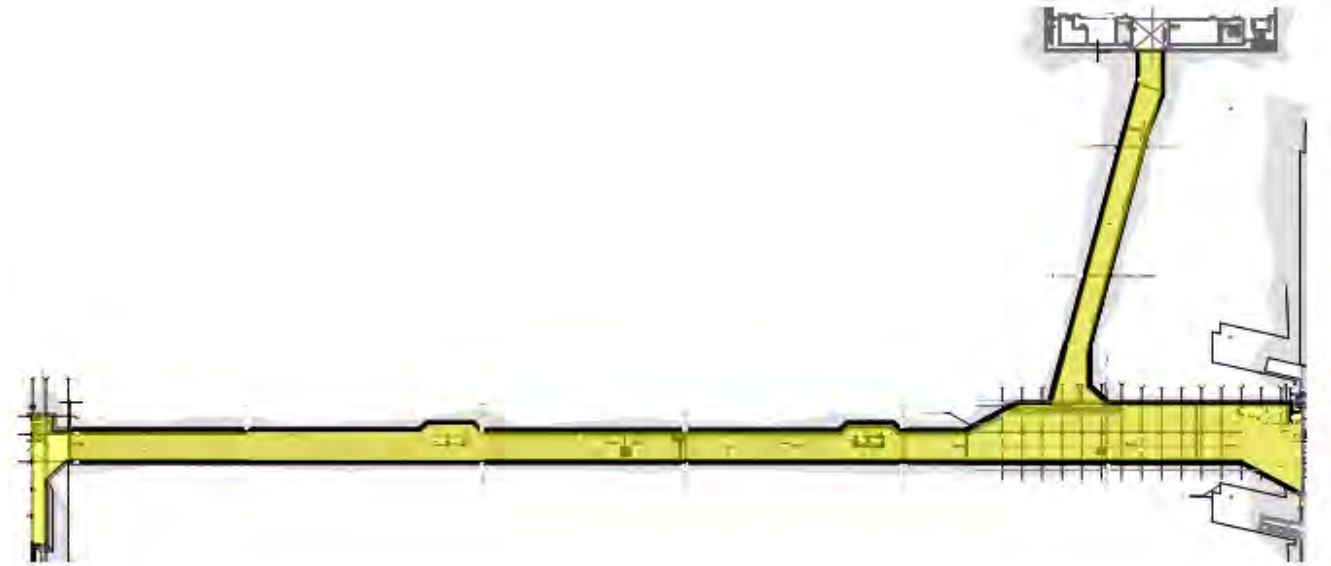
- ☐ Utility Tunnel:
 - ☐ Open: TBD Closed: TBD

- ☐ TUTL - E:
 - ☐ Open: TBD Closed: TBD

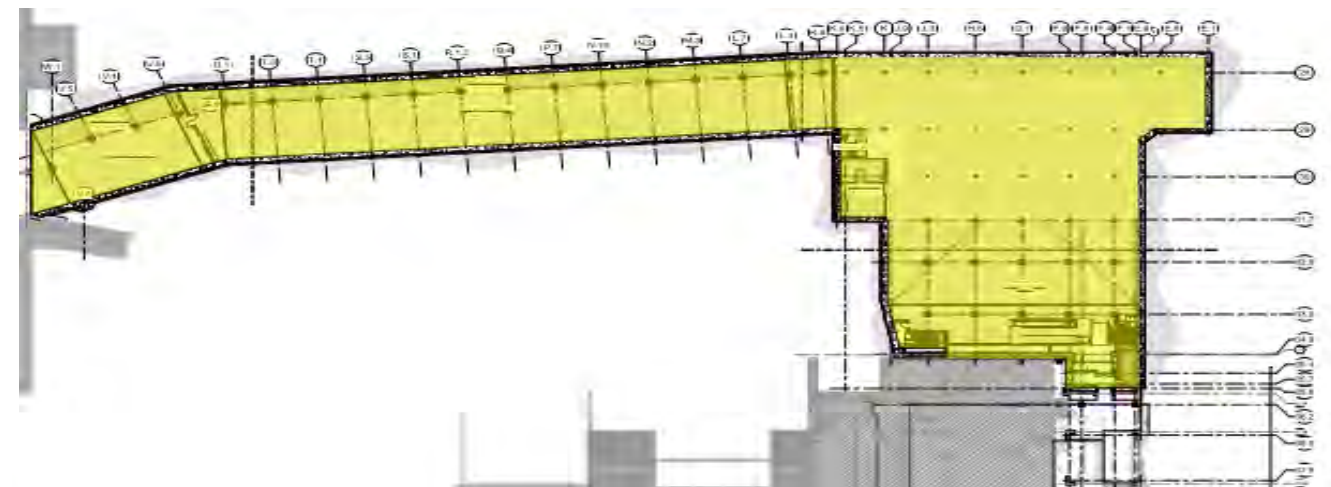
Upcoming Coordination:

- ☐ 9/11/2019: Walk areas N7-N5 Apron Level
- ☐ 9/18/2019: Walk area N4-N1 Apron Level
- ☐ 9/25/2019: Walk Utilidor West

Utility Tunnel

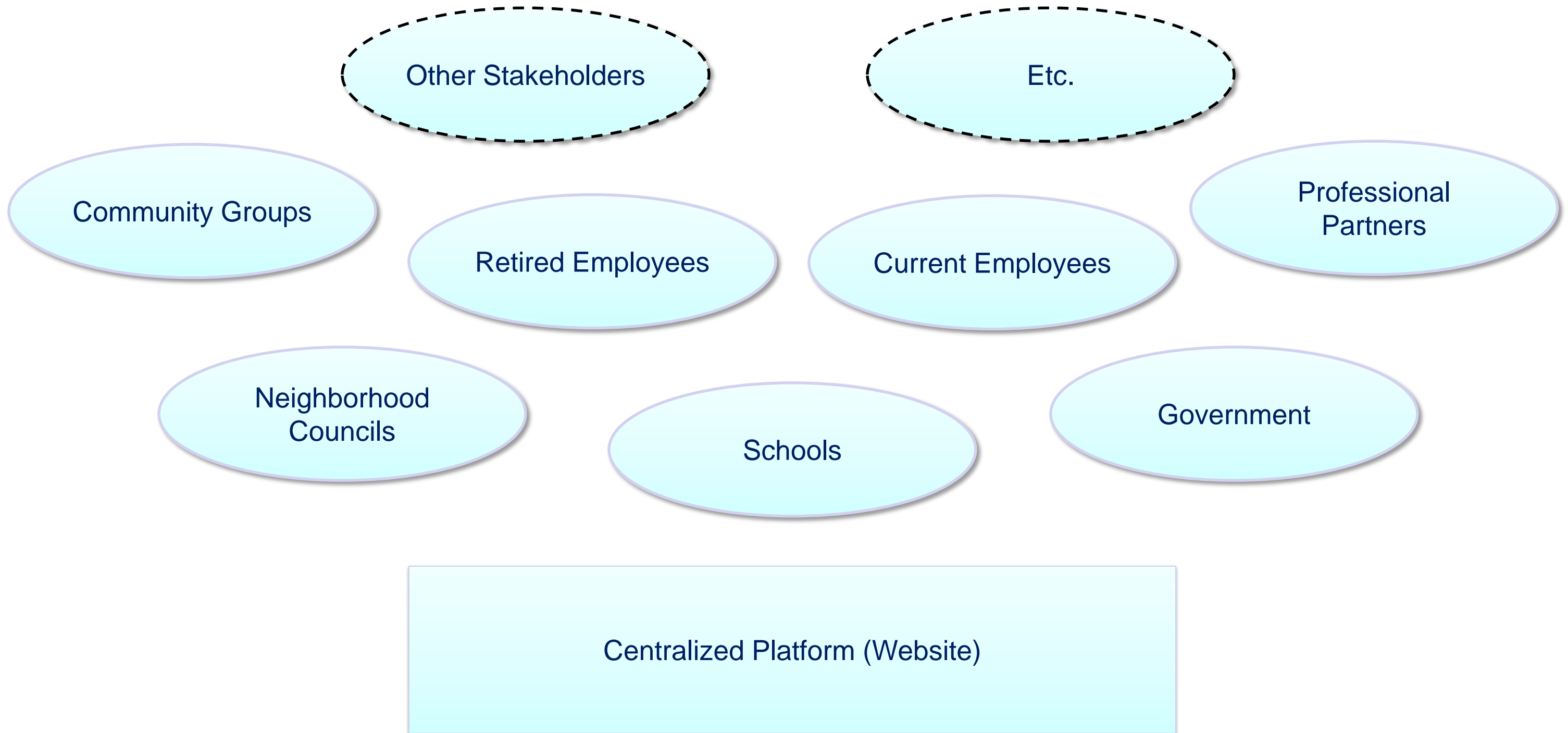


TUTL - E



- Areas Walked
- Areas To Be Walked

AOR Volunteer Outreach Update



AOR Volunteer Outreach Update



LAX NEEDS YOU!

**HELP LOS ANGELES INTERNATIONAL AIRPORT TEST
NEW INTERNATIONAL CONCOURSE PRIOR TO OPENING**

Los Angeles International Airport (LAX) is seeking hundreds of volunteers to assist in testing the readiness of the new Midfield Satellite Concourse for its projected opening in the summer of 2020 by acting as 'passengers/guests' for this facility's Operational Trials Process.

LAX is about a year away from opening the new \$1.6 billion Midfield Satellite Concourse, which will replace up to 13 gates for international and domestic flights, featuring a modern design and state-of-the-art technology that complements the Tom Bradley International Terminal. This exciting project is another step in reimagining LAX and helping create the gold-standard airport that the City of Los Angeles deserves.

But before this new 750,000-square-foot building can open to the traveling public, the airport must test the level of service and functionality of every aspect of this facility. From restrooms and wayfinding, to baggage systems and passenger boarding bridges, we need your help to put the new concourse to through realistic operational trials before we open it to the world!

Therefore, LAX is seeking up to 600 hundred volunteers to act as 'passengers', evaluators, monitors and more. Because these trials are complex and require careful advance planning, we are gathering interest in participation now.

Volunteer & Stakeholder Outreach

- ☐ Final of Messaging - Completed
- ☐ Volunteer Demographic Survey - Completed
- ☐ Community & Local Stakeholders
 - ☐ Identified & Contacts Updated
- ☐ Government Stakeholders Currently Under Review
 - ☐ Identified & Contacts Updated
- ☐ Next Steps:
 - ☐ Send out Messaging for Passenger Volunteers - Sep 2019
 - ☐ Send out Messaging to LAX Employees & Industry Partners - Oct 2019
 - ☐ Vet All Responses

In Works:

- ☐ CBP / TSA - In-Transit Passenger Processing - DCN 115
- ☐ GIDSs Advertising Modifications
- ☐ Children's Play Area
- ☐ Back-of-house FF&E Needs
- ☐ Self-Boarding/E-Gates - boarding area
- ☐ RCT

IT

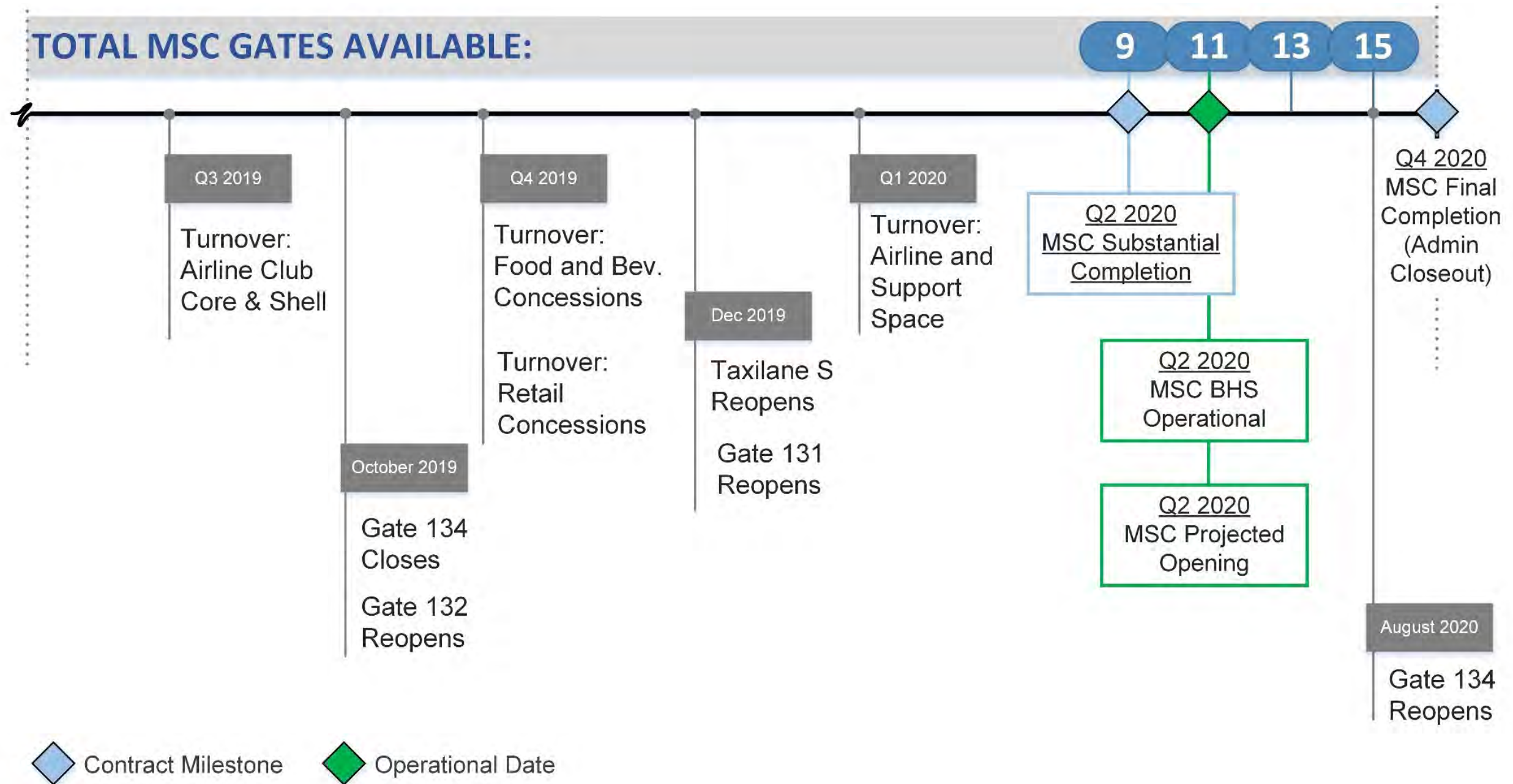
- ☐ Interactive Displays Millwork Design
- ☐ DAS Cellular & 5G

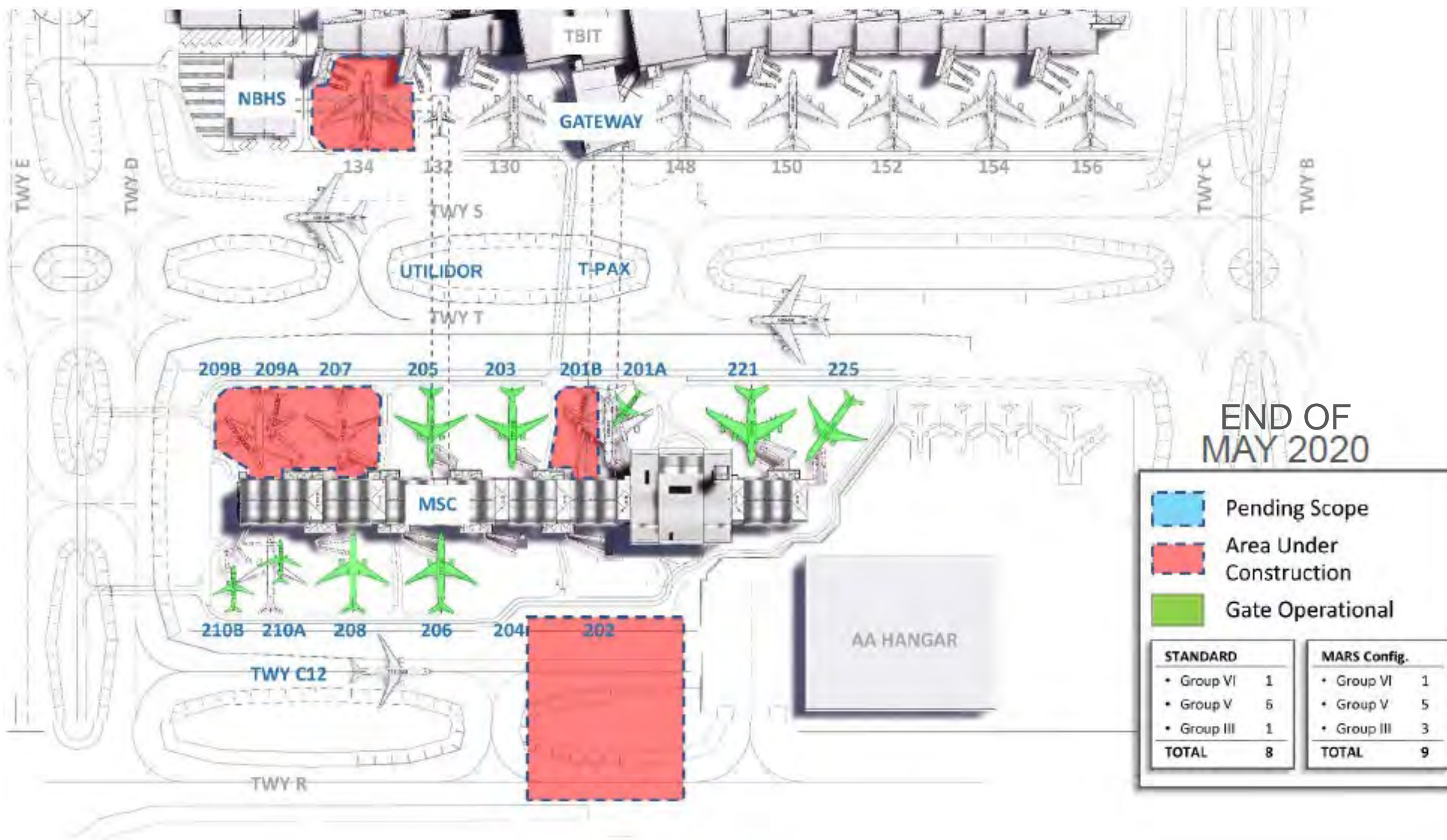


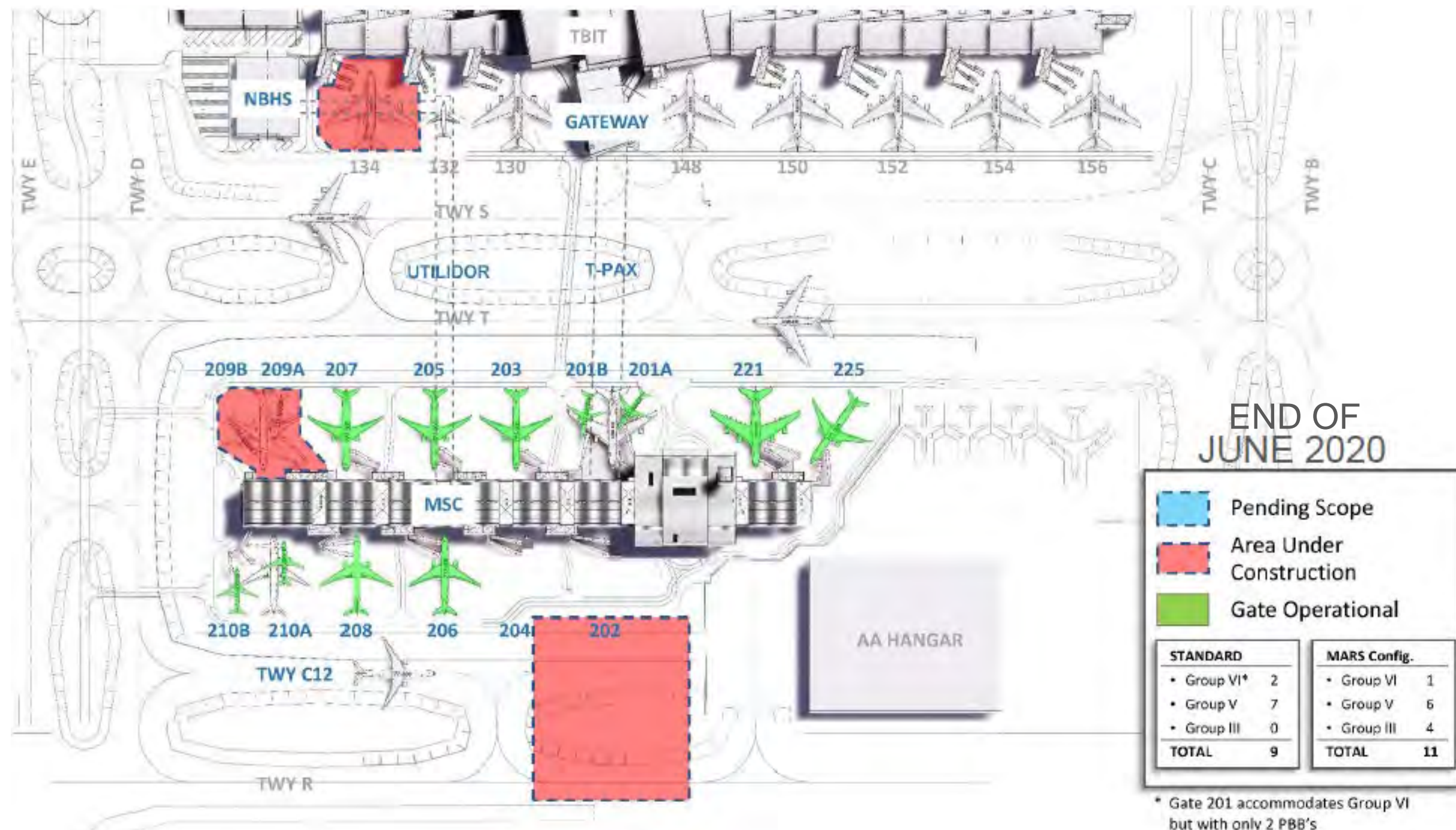


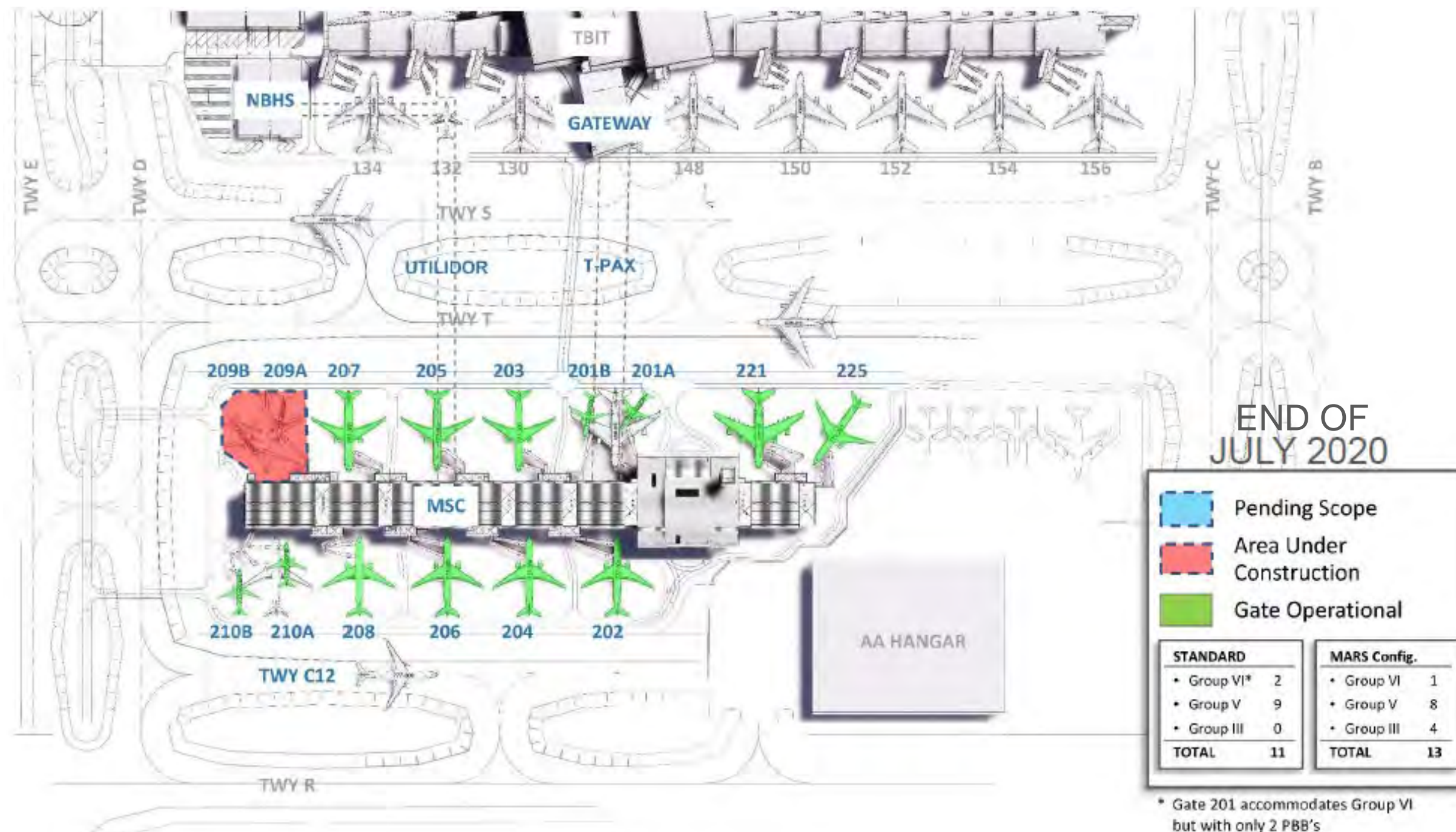
Recurring

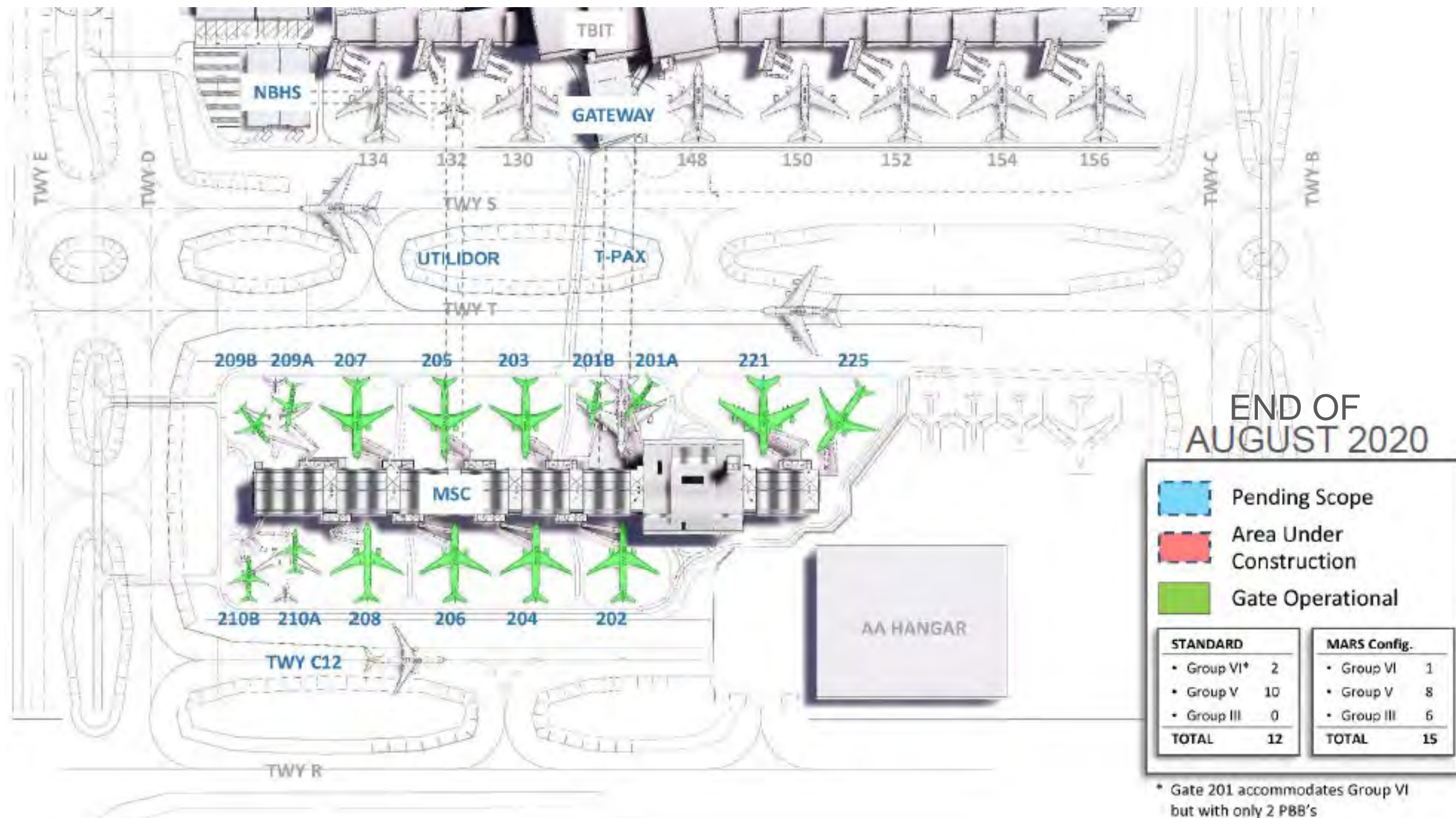
- | | |
|--|------------------------|
| <input type="checkbox"/> Ramp Control Tower | Weekly Tues |
| <input type="checkbox"/> Maintenance Access Walks | Weekly Wed |
| <input type="checkbox"/> Concessions Coordination | Weekly Thurs |
| <input type="checkbox"/> AOR FIT for Airlines | Weekly Thurs |
| <input type="checkbox"/> BHS Coordination | Weekly Fri |
| <input type="checkbox"/> AOR Volunteer Outreach | Bi-Weekly Tues |
| <input type="checkbox"/> AOR FMUG Working Group | Bi-Weekly Thurs |
| <input type="checkbox"/> AOR RCT Focus Group | Bi-Weekly Thurs |
| <input type="checkbox"/> Risk Management Collaboration | Bi-Weekly Fri |
| <input type="checkbox"/> BHS Schedule | Last Wed of each month |
| <input type="checkbox"/> BHS Recovery Coordination | Weekly Wed |











Questions / Feedback

